

WAAS CH 42510 W10A	APP CRS 098°	Rwy Idg TDZE Apt Elev	3901 906 906
--	------------------------	-----------------------------	---

RNAV (GPS) RWY 10L

FLYING CLOUD (FCM)

RNP APCH.

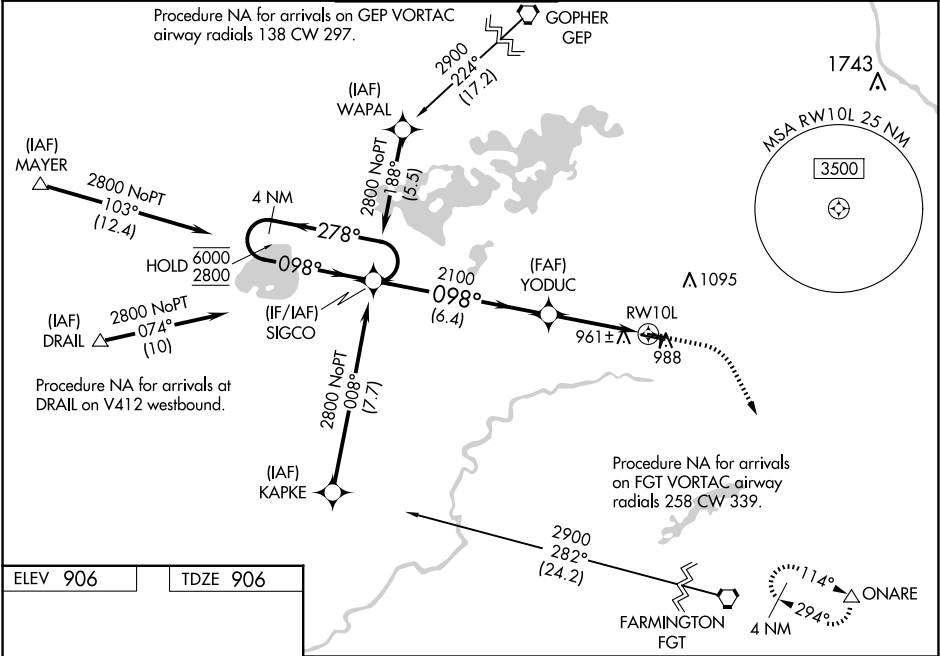
▼

⚠

Baro-VNAV NA when using Minneapolis-St Paul Intl/Wold Chamberlain altimeter setting.
For uncompensated Baro-VNAV systems, LNAV-VNAV NA below -22°C (-7°F) or above 54°C (130°F). When local altimeter setting not received, use Minneapolis-St Paul Intl/Wold Chamberlain altimeter setting and increase all DA 34 feet and all MDA 40 feet; increase LNAV/VNAV visibility ½ mile all Cats, and Circling Cat D ¼ mile. When Circling to Rwy 18, 36 at night, operational VGSI required, remain on or above VGSI glidepath until threshold.

MISSED APPROACH: Climb to 1400 then climbing right turn to 2900 direct ONARE and hold.

ATIS 124.9	MINNEAPOLIS APP CON 134.7 284.7	FLYING CLOUD TOWER ★ 119.15 (CTAF)	GND CON 121.7	CLNC DEL 121.7 (When twr closed)	UNICOM 122.95
----------------------	---	--	-------------------------	---	-------------------------



ELEV 906 | TDZE 906

HIRL Rwy 10R-28L

REIL Rwy 10L and 28R

REIL Rwy 18, 28L, and 36

MIRL Rwy 10L-28R

MIRL Rwy 18-36

4 NM

Holding Pattern

SIGCO

1400

2900

ONARE

6000

2800

278°

098°

GP 3.00°

TCH 39°

YODUC

2100

2100

RW10L

6.4 NM

3.6 NM

CATEGORY	A	B	C	D
LPV DA	1187-1 281 (300-1)			
LNAV/VNAV DA	1230-1 ½ 324 (400-1 ½)			
LNAV MDA	1240-1 334 (400-1)			
CIRCLING	1320-1 414 (500-1)	1440-1 534 (600-1)	1440-1 ½ 534 (600-1 ½)	1540-2 634 (700-2)

NC-1, 10 JUL 2025 to 07 AUG 2025

NC-1, 10 JUL 2025 to 07 AUG 2025