

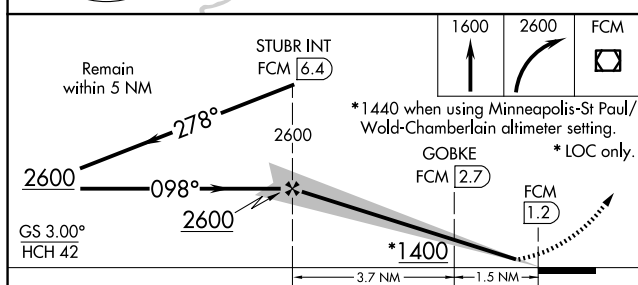
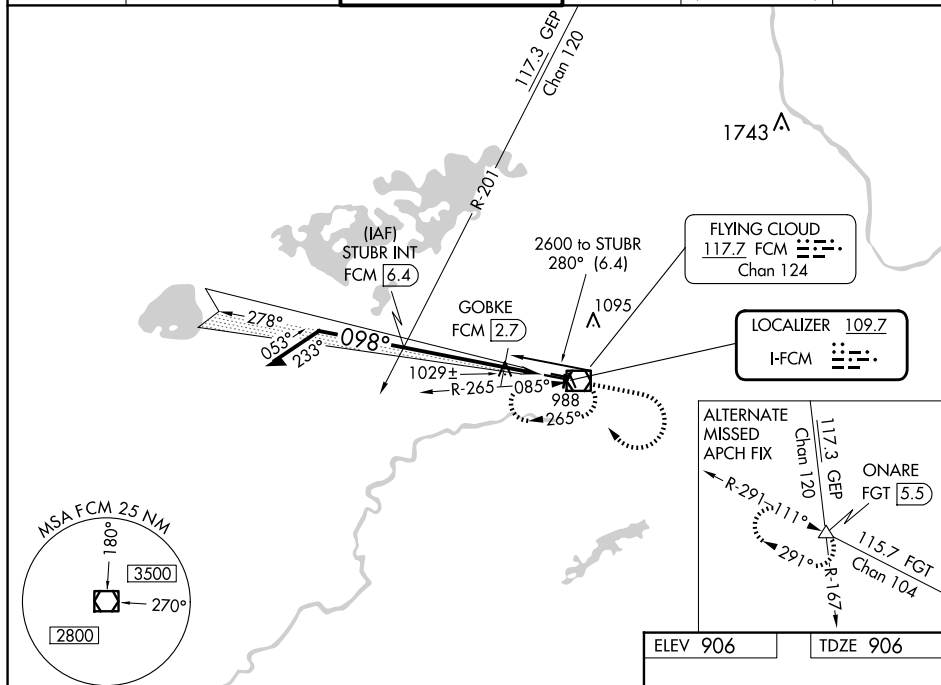


LOC FCM	APP CRS	Rwy Idg	5001
109.7	098°	TDZE	906
		Apt Elev	906

COPTER ILS or LOC RWY 10R
FLYING CLOUD (FCM)

	<p>For inoperative MALSR, increase visibility to ½ mile. When local altimeter setting not received, use Minneapolis-St Paul Intl-Wold Chamberlain altimeter setting and increase DA 34 feet and all MDA 40 feet.</p>	<p>MALSR</p>		<p>MISSED APPROACH: Climb to 1600 then climbing right turn to 2600 direct FCM VOR/DME and hold, continue climb-in-hold to 2600.</p>
---	--	--------------	---	---

ATIS 124.9	MINNEAPOLIS APP CON 134.7 284.7	FLYING CLOUD TOWER ★ 119.15 (CTAF) 0	GND CON 121.7	CLNC DEL 121.7 (When twr closed)	UNICOM 122.95
----------------------	---	--	-------------------------	---	-------------------------



CATEGORY	COPTER
H-ILS 10R	1106-¼ 200 (200-¼)
H-LOC 10R	1400-¼ 494 (500-¼)
GOBKE FIX MINIMUMS (DME REQUIRED)	
H-LOC 10R	1280-¼ 374 (400-¼)

