

WAAS CH <b>99499</b> <b>W33A</b>	APP CRS <b>327°</b>	Rwy Idg TDZE <b>1153</b> Apt Elev <b>1160</b>
--	------------------------	---

RNAV (GPS) RWY 33

WAYNESVILLE-ST ROBERT RGNL FORNEY FLD (TBN)

RNP APCH - GPS.

▼

▲

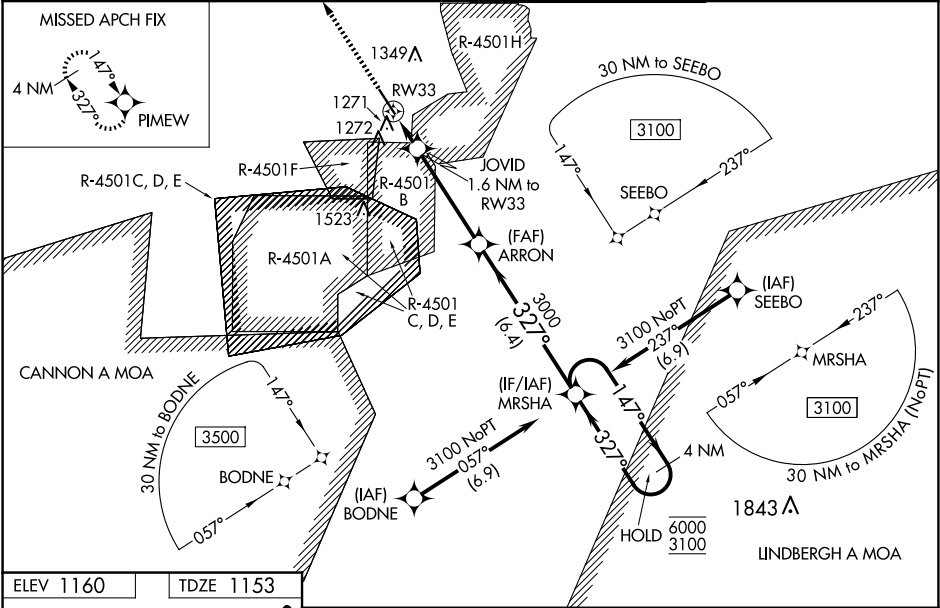
For uncompensated Baro-VNAV systems, LNAV/VNAV NA below -15°C or above 54°C.  
When local altimeter setting not received, use Rolla Nil altimeter setting and increase LPV DA to 1472 feet, increase LNAV/VNAV DA to 1521 feet and all MDAs 80 feet.  
Increase LNAV Cat C/D visibility to RVR 6000. Inop table does not apply to LPV all Cats, LNAV/VNAV all Cats, and LNAV Cats A/B. For inop ALS increase LNAV Cats C/D visibility to RVR 6000. VDP and Baro-VNAV NA when using Rolla Nil altimeter setting.  
Circling NA west of Rwy 15-33. Rwy 33 helicopter visibility reduction below ¾ SM NA.  
Inop table does not apply to LPV all Cats, LNAV/VNAV all Cats, and LNAV Cats A/B when using Rolla Nil altimeter setting.

MALS

A2

MISSED APPROACH:  
Climb to 3100 direct  
PIMEW and hold.

D-ATIS <b>118.7 229.4</b>	KANSAS CITY CENTER <b>128.35 284.675</b>	FORNEY TOWER ★ <b>125.4 (CTAF) 0 268.7</b>	GND CON <b>123.75 256.8</b>
------------------------------	---	---	--------------------------------



ELEV 1160	TDZE 1153
-----------	-----------

