

LOC I-INL 111.95	APP CRS 313°	Rwy Idg 7400 TDZE 1166 Apt Elev 1182
----------------------------	------------------------	---

ILS or LOC RWY 31
FALLS INTL/EINARSON FLD (INL)

DME required.

T A	<p>Circling Rwy 4, 22 NA at night.</p> <p>Autopilot coupled approach NA below 1731 feet.</p> <p>#DME from INL VOR/DME.</p>
----------------------	--

MALSR



MISSED APPROACH: Climb to 3300 on INL VOR/DME R-310 to HODEV/INL 14 DME and hold.

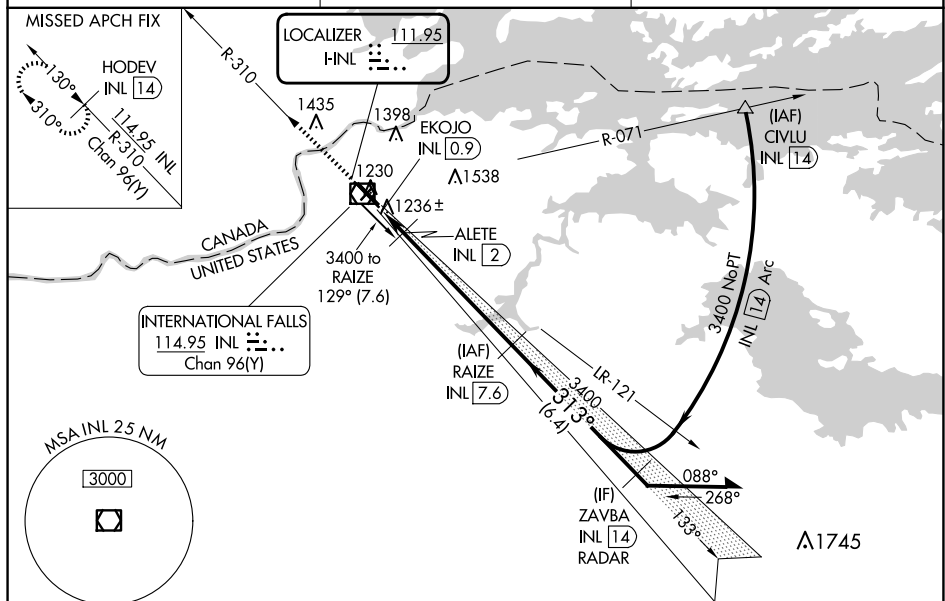
ASQS

120.0

MINNEAPOLIS CENTER

120.9 377.1

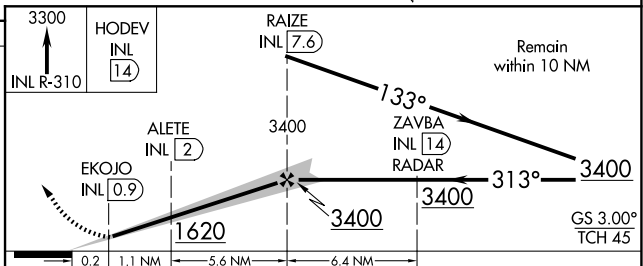
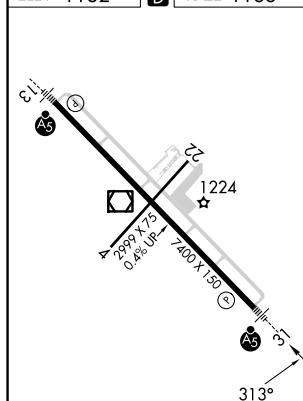
UNICOM

122.8 (CTAF) **L**

ELEV 1182

D

DZE 1166



CATEGORY	A	B	C	D
S-ILS 31	1366-1/2 200 (200-1/2)			
S-LOC 31	1620-1/2 454 (500-1/2)		1620-7/8 454 (500-7/8)	
<input checked="" type="checkbox"/> CIRCLING	1620-1 438 (500-1)	1680-1 498 (500-1)	1900-2 718 (800-2)	1900-2 1/4 718 (800-2 1/4)
AILET FIX MINIMUMS#				
S-LOC 31	1500-1/2 334 (400-1/2)			
<input checked="" type="checkbox"/> CIRCLING	1620-1 438 (500-1)	1680-1 498 (500-1)	1900-2 718 (800-2)	1900-2 1/4 718 (800-2 1/4)

INTERNATIONAL FALLS, MINNESOTA
Amdt 11 17JUN21

48°34'N-93°24'W

FALLS INTL/EINARSON FLD (INL)
ILS or LOC RWY 31