

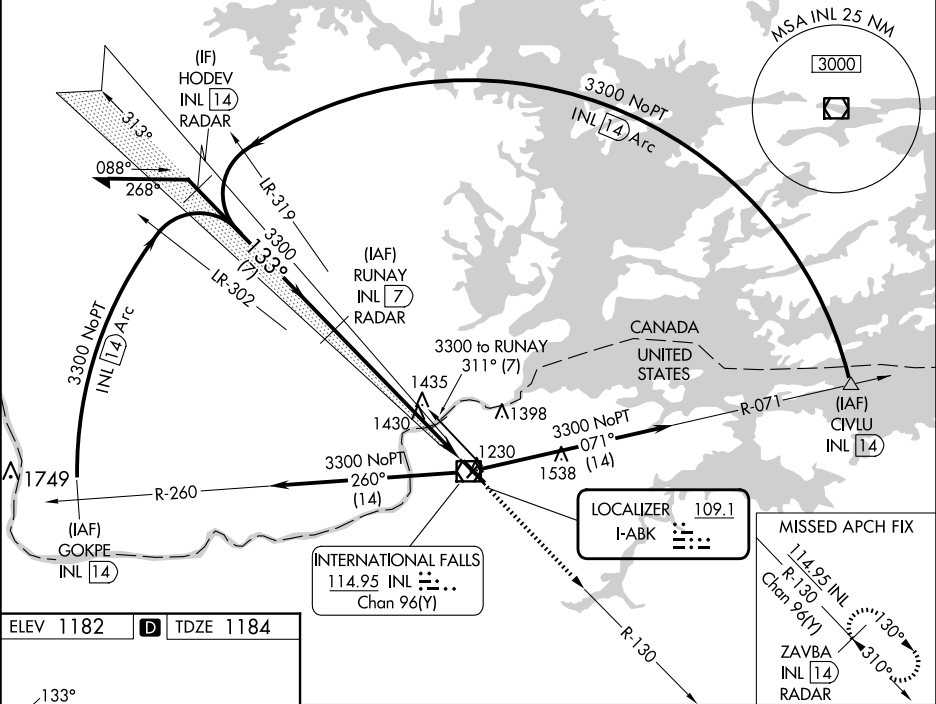
LOC I-ABK 109.1	APP CRS 133°	Rwy Idg TDZE Apt Elev	7400 1184 1182
---------------------------	------------------------	-----------------------------	---

ILS or LOC RWY 13

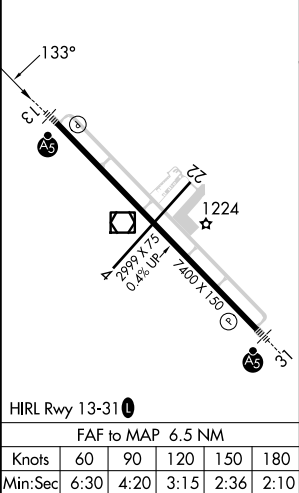
FALLS INTL/EINARSON FLD (INTL)

DME or RADAR required.	MALSR	MISSED APPROACH: Climb to 3400 on INL VOR/DME R-130 to ZAVBA/INL 14 DME/RADAR and hold.
<div><div>NA</div><div>Circling Rwy 4, 22 NA at night. Caution opposing ILS continuously on. DME from INL VOR/DME. DME use requires simultaneous reception of I-ABK and INL DME.</div></div>	<div><div>AS</div></div>	

ASOS 120.0	MINNEAPOLIS CENTER 120.9 377.1	UNICOM 122.8 (CTAF) 0
----------------------	--	---------------------------------



ELEV 1182	D	TDZE 1184
-----------	---	-----------



	Runway INL 7 RADAR			
	HODEV INL 14 RADAR			
	ZAVBA INL 14 RADAR			
	3400			
	INL R-130			
	3300			
	133°			
	7 NM			
	4.9 NM			
	1.6 NM			
CATEGORY	A	B	C	D
S-ILS 13	1384-½ 200 (200-½)			
S-LOC 13	1760-½	576 (600-½)	1760-1¼	576 (600-1¼)
CIRCLING	1760-1	578 (600-1)	1900-2	1900-2¼
			718 (800-2)	718 (800-2¼)