

APP CRS
002°

Rwy Idg
TDZE
406

Apt Elev
411

RNAV (GPS) RWY 36R

SOUTHERN ILLINOIS (MDH)

RNP APCH.

⚠

Circling Rwy 6, 36L NA at night.

⚠

Rwy 36R helicopter visibility reduction below ¾ SM NA.

MISSED APPROACH:
Climb to 2700 direct
HEMPA and hold.

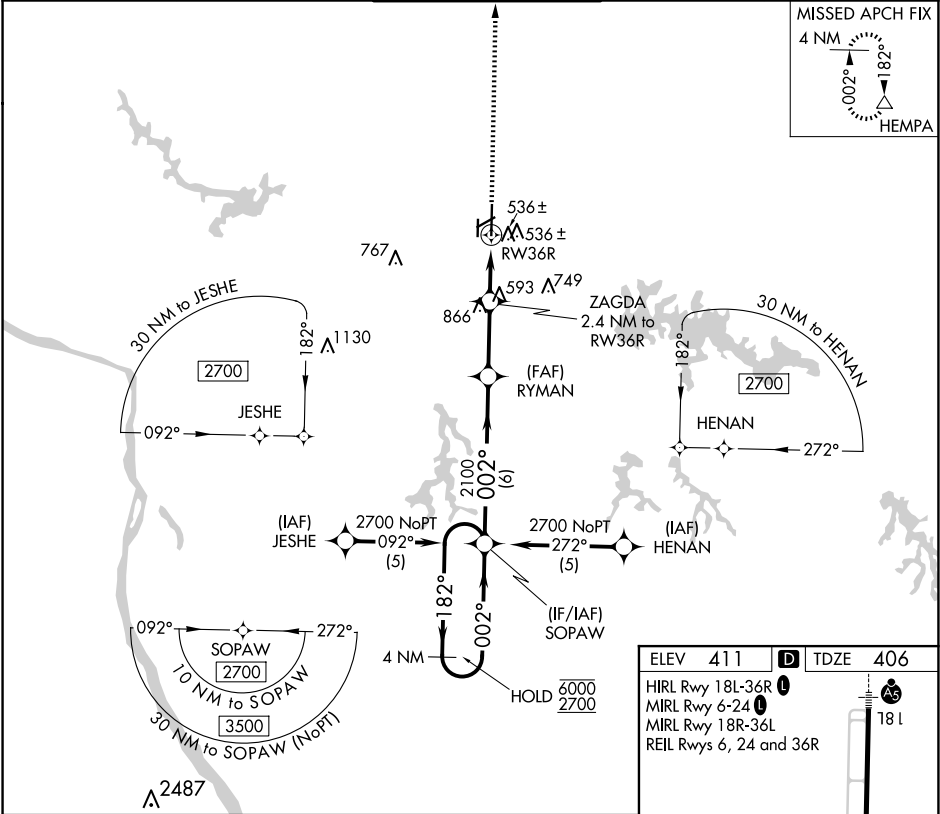
ATIS
119.725

KANSAS CITY CENTER
127.475 346.275

SOUTHERN TOWER ★
125.35 (CTAF) 0 322.4

GND CON
121.8

UNICOM
122.95



4 NM Holding Pattern

VGSI and descent angles not coincident (VGSI Angle 3.00/TCH 45).

2700

HEMPA

SOPAW

RYMAN

ZAGDA

RW36R

6000

2700

182°

002°

002°

2100

1200

3.05°

TCH 55

1.3 NM

1.3 NM

6 NM

2.7 NM

1.1 NM

1.3 NM

CATEGORY	A	B	C	D
LNVA MDA	860-1	454 (500-1)	860-1 3/8	454 (500-1 3/8)
CIRCLING	900-1 489 (500-1)	920-1 509 (600-1)	1180-2 1/4 769 (800-2 1/4)	1180-2 1/2 769 (800-2 1/2)