

WAAS CH 82132 W17A	APP CRS 172°	Rwy Idg TDZE Apt Elev	5800 1234 1234
--	------------------------	-----------------------------	---

RNAV (GPS) RWY 17

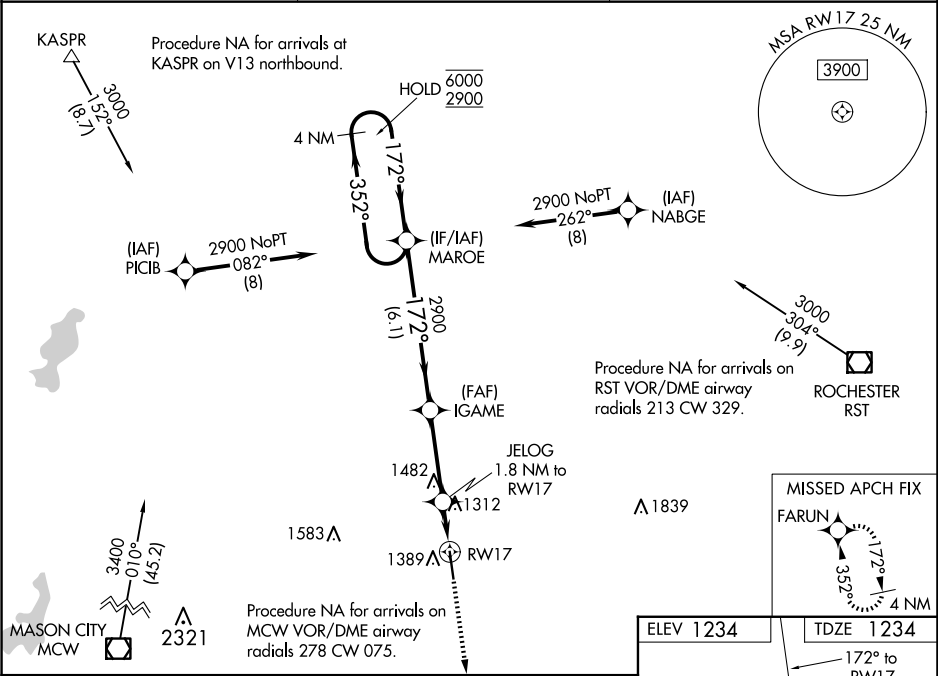
AUSTIN MUNI (AUM)

RNP APCH.

Rwy 17 helicopter visibility reduction below ¾ SM NA.
For uncompensated Baro-VNAV systems, LNAV/VNAV NA below -17°C or above 54°C.

MISSED APPROACH:
Climb to 3800 direct FARUN and hold.

AWOS-3 119.025	ROCHESTER APP CON* 119.8 251.125	UNICOM 122.7 (CTAF) 0
--------------------------	--	--



4 NM Holding Pattern		MAROE	IGAME	JELOG	3800	FARUN
6000 2900		352°	172°	172°	↑	✱
GP 3.00° TCH 41		172°	2900	1.8 NM to RWY 17	*LNAV only	
		6.1 NM	3.3 NM	1.8 NM	*1840	
CATEGORY	A	B	C	D		
LPV DA		1484-1	250 (300-1)			
LNAV/VNAV DA		1505-1	271 (300-1)			
LNAV MDA		1580-1	346 (400-1)			
CIRCLING	1700-1	466 (500-1)	1800-1½ 566 (600-1½)	1880-2 646 (700-2)	HIRL Rwy 17-35 0 REIL Rwy 17 0	