

LOC I-AUM <u>110.55</u>	APP CRS 351°	Rwy Idg 5800 TDZE 1231 Apt Elev 1234
-----------------------------------	------------------------	---

ILS or LOC RWY 35

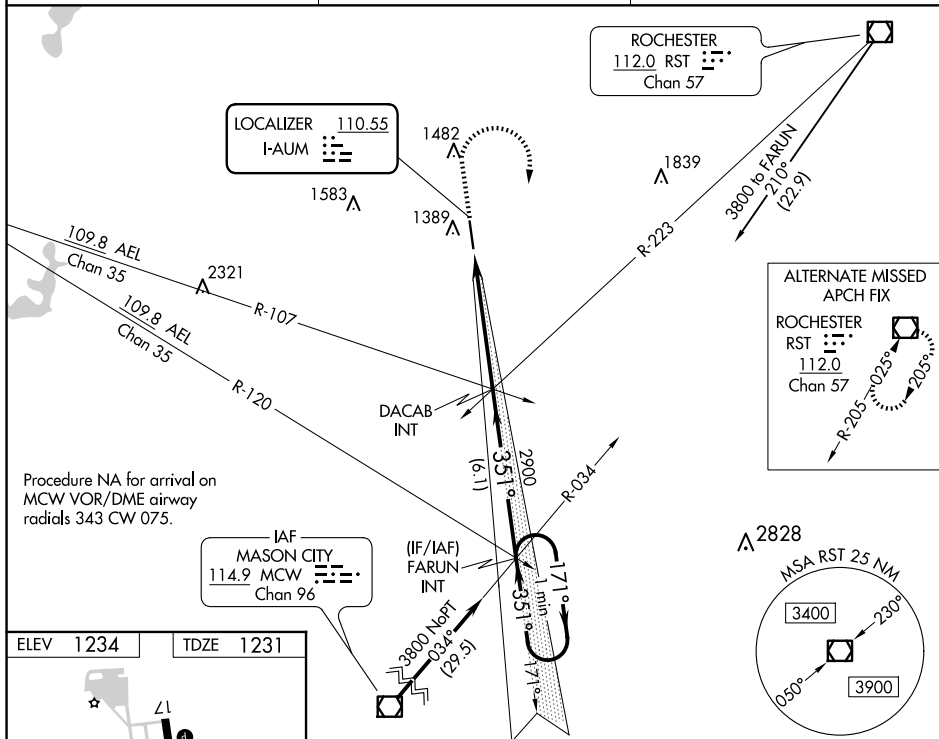
NA When local altimeter setting not received, use Albert Lea altimeter setting and increase all DA 48 feet and all MDA 60 feet; increase Circling Cat C/D visibility $\frac{1}{4}$ SM. For inoperative MALS, increase S-LOC 35 Cats C and D visibility to $1\frac{3}{8}$ mile.

MALSR

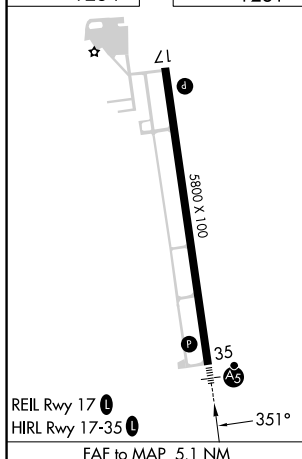


MISSED APPROACH: Climb to 1800 then climbing right turn to 3800 on heading 179° and MCW VOR/DME R-034 to FARUN INT and hold.

AWOS-3 119.025	ROCHESTER APP CON★ 119.8 251.125	UNICOM 122.7 (CTAF) 0
--------------------------	--	---------------------------------



ELEV	1234		TDZE	1231
------	------	--	------	------



1800 ↑	3800 hdg 179°	MCW R-034	FARUN INT	VGS1 and ILS glidepath not coincident (VGS1 Angle 3.00/TCH 42).		FARUN INT	One Minute Holding Pattern
				GS 3.00° TCH 47			
CATEGORY	A	B	C	D			
S-ILS 35	1431-1½ 200 (200-½)						
S-LOC 35	1700-1½	469 (500-½)	1700-1	469 (500-1)			
C CIRCLING	1740-1	506 (600-1)	1800-1½ 566 (600-1½)	1880-2 646 (700-2)			