

APP CRS  
229°

Rwy Ldg  
5819

TDZE  
296

Apt Elev  
306

RNAV (GPS) Y RWY 23

FREDERICK MUNI (FDK)

RNP APCH.

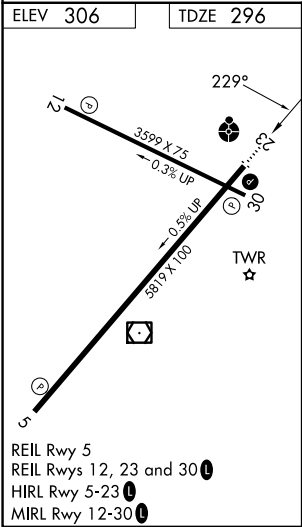
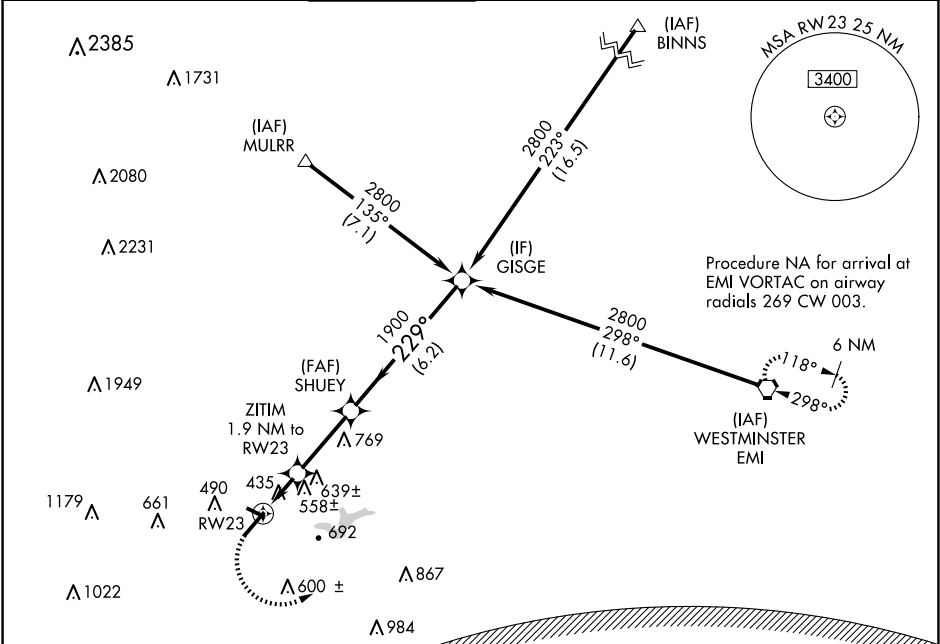
▼

Inop table does not apply to Cat C. Rwy 23 helicopter visibility reduction below ¾ SM NA. Circling Rwy 30 NA at night.

ODALS

MISSED APPROACH: Climbing left turn to 3000 direct EMI VORTAC and hold.

ATIS 124.875	POTOMAC APP CON 126.1 338.25	FREDERICK TOWER ★ 132.4 (CTAF) 0	GND CON 127.425	CLNC DEL 127.425	CLNC DEL 126.9 (When twr closed)	UNICOM 122.95
-----------------	---------------------------------	-------------------------------------	--------------------	---------------------	--	------------------



WASHINGTON DC METROPOLITAN SFRA

WARNING -- WASHINGTON DC SFRA.  
CTC POTOMAC APP CON

3000 EMI

VGSI and descent angles not coincident (VGSI Angle 3.00/TCH 54).

SHUEY

ZITIM 1.9 NM to RW23

GISGE

Procedure Turn NA

RW23

1020

1900

2800

229°

3.41° TCH 50

1.9 NM

3 NM

6.2 NM

CATEGORY	A	B	C	D
LNAV MDA	820-¾ 524 (600-¾)	820-1½ 524 (600-1½)	820-1½ 524 (600-1½)	820-1¾ 524 (600-1¾)
CIRCLING	920-1 614 (700-1)	1100-2¼ 794 (800-2¼)	1200-2¾ 894 (900-2¾)	