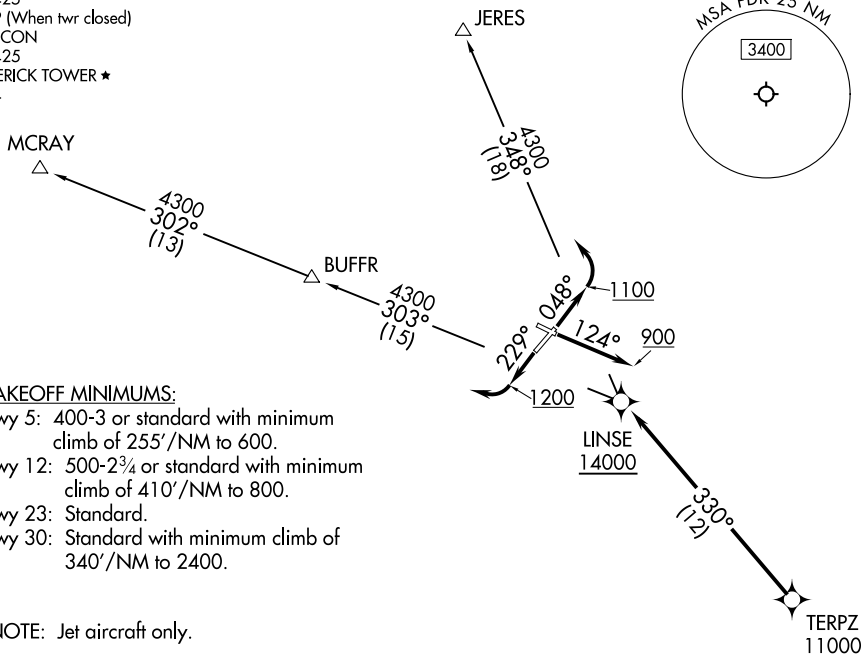
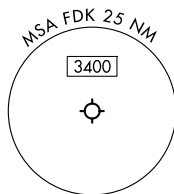


POTOMAC DEP CON
126.1 338.25
ATIS
124.875
CLNC DEL
127.425
126.9 (When twr closed)
GND CON
127.425
FREDERICK TOWER ★
132.4

RNAV 1 - DME/DME/IRU or GPS.

RADAR required.

TOP ALTITUDE:
16000



NOTE: Chart not to scale.

DEPARTURE ROUTE DESCRIPTION

TAKEOFF RUNWAY 5: Climb on heading 048° to 1100 before turning left.

TAKEOFF RUNWAY 12: Climb on heading 124° to 900 before proceeding westbound.

TAKEOFF RUNWAY 23: Climb on heading 229° to 1 200 before turning right.

Climb on assigned heading for RADAR vectors to cross TERPZ at or above 11 000, thence....

...then on track 330° to cross LINSE at or above 14000. Then on assigned transition. Maintain 16000, expect filed altitude 10 minutes after departure.

JERES TRANSITION (LINSE2.JERES)

MCRAY TRANSITION (LINSE2.MCRAY)

LINSE TWO DEPARTURE (RNAV)

(LINSE2.LINSE) 20FEB25

FREDERICK, MARYLAND
FREDERICK MUNI (FDK)

NE-3, 10 JUL 2025 to 07 AUG 2025