

WAAS CH <b>40329</b> <b>W30A</b>	APP CRS <b>300°</b>	Rwy Idg TDZE <b>656</b> Apt Elev <b>656</b>
--	------------------------	---

RNAV (GPS) RWY 30

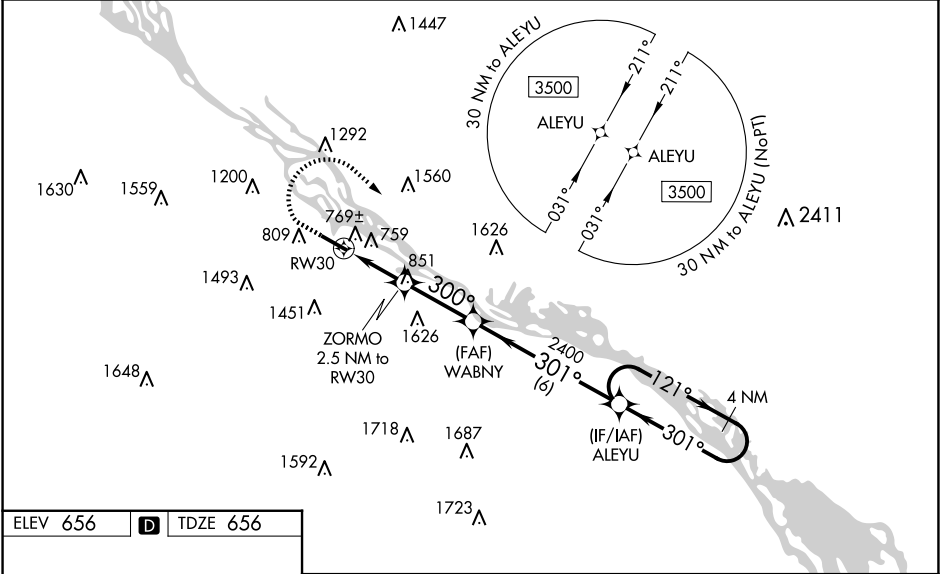
WINONA MUNI/MAX CONRAD FLD (ON A)

For uncompensated Baro-VNAV systems, LNAV/VNAV NA below -16°C (4°F) or above 54°C (130°F). DME/DME RNP-0.3 NA.  
When local altimeter setting not received, use La Crosse altimeter setting and increase all LPV DA to 1064 feet and visibility 1/8 mile all Cats, all LNAV/VNAV DA to 1193 and visibility 1/8 mile all Cats, and all MDA 60 feet, increase LNAV Cat C/D and Circling Cat B visibility 1/4 mile. For inop ALS when using La Crosse altimeter setting, increase LPV all Cats visibility to 1 3/8 mile, and LNAV Cats C/D visibility to 2 mile. Baro-VNAV and VDP NA when using La Crosse altimeter setting.

MALSR

MISSED APPROACH:  
Climb to 1800 then climbing right turn to 3500 direct ALEYU and hold.

AWOS-3 <b>118.075</b>	MINNEAPOLIS CENTER <b>128.6 363.0</b>	UNICOM <b>122.8 (CTAF) 0</b>
--------------------------	--	---------------------------------



ELEV 656

D

TDZE 656

REIL Rwy 12 0

MIRL Rwy 12-30 0

712

56.7° X 100

300°

30°

AS

	1800	3500	ALEYU	
	<div></div>	<div></div>	<div></div>	
* LNAV only	ZORMO 2.5 NM to RW30	WABNY	ALEYU 4 NM Holding Pattern	
	* 1.9 NM to RW30	2400	121° 301°	3500
	1500*	300°	301°	GP 3.00° TCH 50
	1.9 NM	0.6 NM	2.8 NM	6 NM
CATEGORY	A	B	C	D
LPV DA	1011-3/4 355 (400-3/4)			
LNAV/ VNAV DA	1140-1 1/8 484 (500-1 1/8)			
LNAV MDA	1280-1/2	624 (700-1/2)	1280-1 3/8	624 (700-1 3/8)
CIRCLING	1560-1 1/4 904 (1000-1 1/4)	1600-1 1/4 944 (1000-1 1/4)	1780-3 1124 (1200-3)	1980-3 1324 (1400-3)

NC-1, 10 JUL 2025 to 07 AUG 2025

NC-1, 10 JUL 2025 to 07 AUG 2025