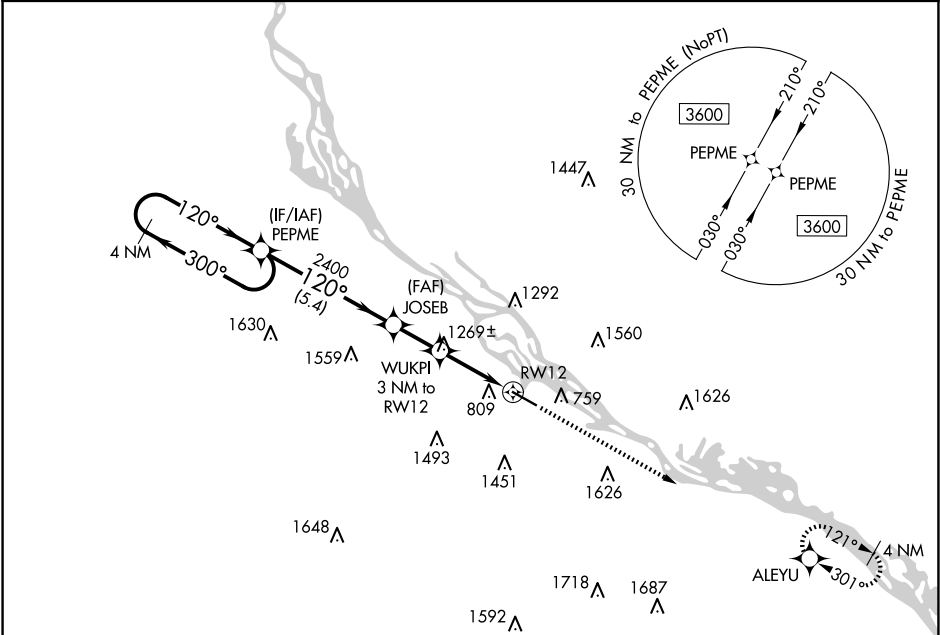


APP CRS	Rwy Idg	5199
120°	TDZE	656
	Apt Elev	656

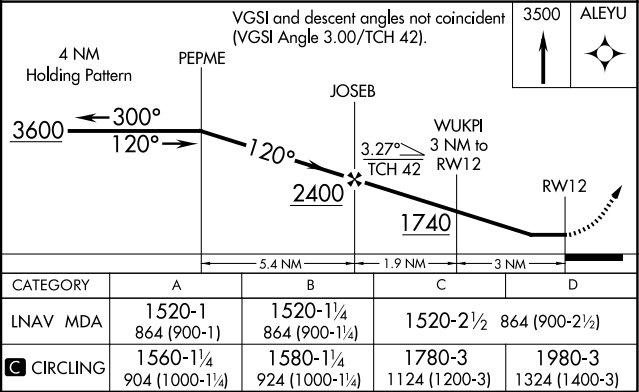
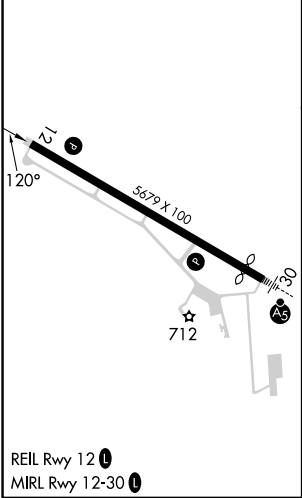
RNAV (GPS) RWY 12
WINONA MUNI/MAX CONRAD FLD (ON A)

<div><div>⚠</div><div>⚠</div><div>❄ -29°C</div></div> <div>Rwy 12 helicopter visibility reduction below ¾ NA. DME/DME RNP-0.3 NA.</div>	MISSED APPROACH: Climb to 3500 direct ALEYU and hold.
---	---

AWOS-3 118.075	MINNEAPOLIS CENTER 128.6 363.0	UNICOM 122.8 (CTAF) 1
-------------------	-----------------------------------	--------------------------



ELEV 656	D	TDZE 656
----------	---	----------



NC-1, 10 JUL 2025 to 07 AUG 2025

NC-1, 10 JUL 2025 to 07 AUG 2025