




LOC/DME FONA <u>109.35</u> Chan 30(Y)	APP CRS 300°	Rwy Idg <b>5199</b> TDZE <b>656</b> Apt Elev <b>656</b>
---	-----------------	---

ILS Z or LOC Z RWY 30  
WINONA MUNI/MAX CONRAD FLD (ONA)

RNAV 1-GPS or radar required for procedure entry. DME required.  
RNAV-1 GPS required from MAP to ALEYU.

 VDP NA with La Crosse alimeter setting. When local alimeter setting not received, use La Crosse alimeter setting and increase S-ILS 30 DA to 1064 and all visibilities.  NA  1/8 SM, increase all MDA 60 feet, and visibility S-LOC 30 Cat C/D 1/8 SM and Circling Cat B visibility 1/4 SM. For inop ALS, increase S-ILS 30 all Cats visibility to 1 1/8 SM, and S-LOC 30 Cats C/D visibility to 1 3/8 SM. For inop ALS when using La Crosse alimeter setting, increase S-ILS 30 all Cats visibility to 1 3/8 SM, and increase S-LOC 30 Cats C/D visibility to 1 3/8 SM.

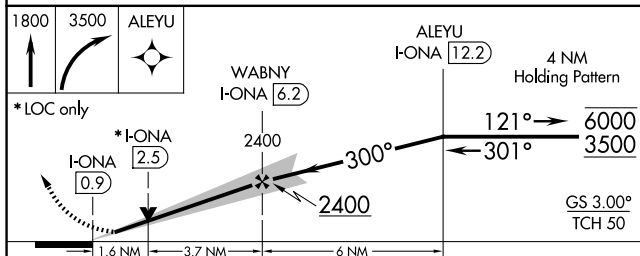
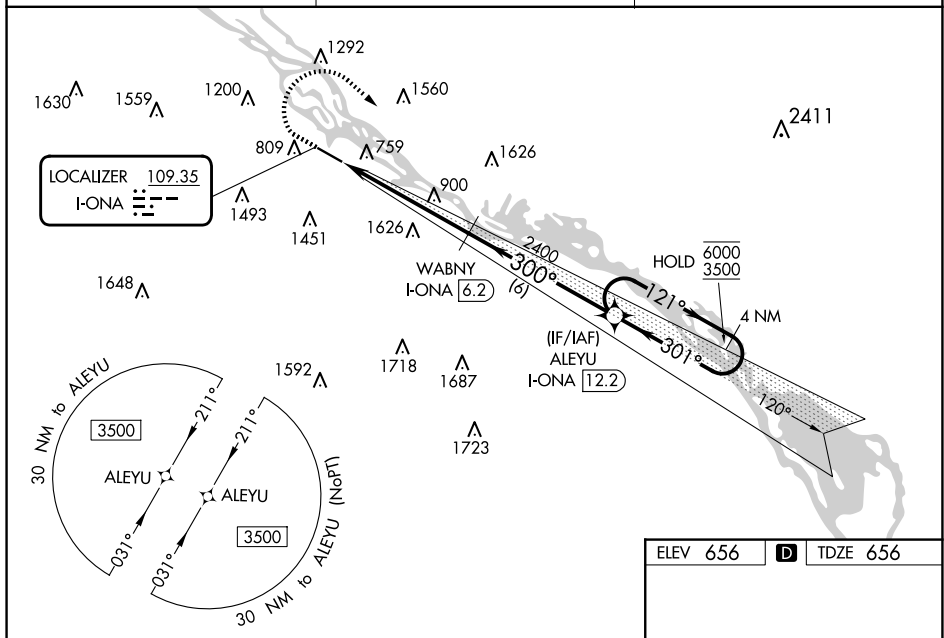
MALSR



**MISSED APPROACH:**  
Climb to 1800 then  
climbing right turn to  
3500 direct ALEYU  
and hold.

AWOS-3  
118.075

MINNEAPOLIS CENTER  
128.6 363.0

UNICOM  
122.8 (CTAF) **L**

CATEGORY	A	B	C	D
S-ILS 30	1053- $\frac{3}{4}$ 397 (400- $\frac{3}{4}$ )			
S-LOC 30	1220- $\frac{1}{2}$ 564 (600- $\frac{1}{2}$ )	1220-1 $\frac{1}{4}$ 564 (600-1 $\frac{1}{4}$ )		
<b>C</b> CIRCLING	1560-1 $\frac{1}{4}$ 904 (1000-1 $\frac{1}{4}$ )	1600-1 $\frac{1}{4}$ 944 (1000-1 $\frac{1}{4}$ )	1780-3 1124 (1200-3)	1980-3 1324 (1400-3)

ELEV 656      D      TDZE 656

12

5679 X 100

A

712

A5

300°

REIL Rwy 12

MIRL Rwy 12-30