

LOC/DME I-ONA <b>109.35</b> Chan <b>30</b> (Y)	APP CRS <b>300°</b>	Rwy Idg TDZE <b>656</b> Apt Elev <b>656</b>
--	------------------------	---

ILS Y or LOC Y RWY 30

WINONA MUNI/MAX CONRAD FLD (ONA)

DME required.

V

NA

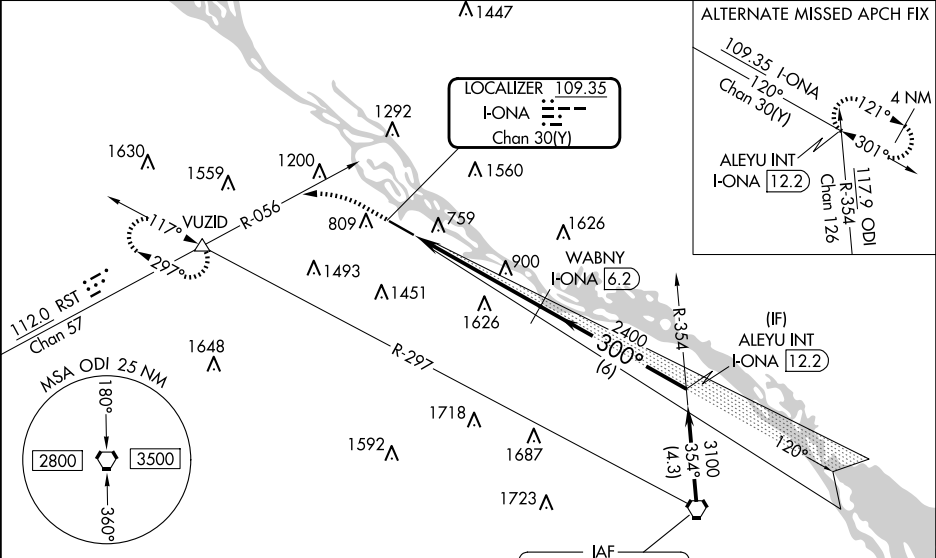
-29°C

VDP NA with La Crosse altimeter setting. When local altimeter setting not received, use La Crosse altimeter setting and increase S-ILS 30 DA to 1127 and all visibilities ½ mile, increase all MDA 60 feet, and visibility S-LOC 30 Cat C/D ½ mile, and Circling Cat B ¼ mile. For inop ALS, increase S-ILS 30 all Cats visibility to 1½ mile, increase S-LOC 30 Cats C/D visibility to 1½ mile. For inop ALS when using La Crosse altimeter setting, increase S-ILS 30 all Cats visibility to 1½ mile, increase S-LOC 30 Cats C/D visibility to 1½ mile.

MALSR

MISSED APPROACH:  
Climb to 1800 then climbing left turn to 3000 on RST VOR/  
DME R-056 to VUZID  
INT and hold.

AWOS-3 <b>118.075</b>	MINNEAPOLIS CENTER <b>128.6 363.0</b>	UNICOM <b>122.8</b> (CTAF)
--------------------------	--	-------------------------------



ELEV 656 D TDZE 656

REIL Rwy 12

MIRL Rwy 12-30

1800	3000	VUZID	Δ	Δ2045
RST R-056				
*LOC only	*I-ONA			
I-ONA 0.9	I-ONA 2.5			
1.6 NM	3.7 NM	6 NM		
CATEGORY	A	B	C	D
S-ILS 30	1074-1½	418 (500-1½)		
S-LOC 30	1220-½	564 (600-½)	1220-¼	564 (600-1½)
CIRCLING	1560-1¼ 904 (1000-1¼)	1600-1¼ 944 (1000-1¼)	1780-3 1124 (1200-3)	1980-3 1324 (1400-3)