

VOR/DME RHI	APP CRS	Rwy Ldg	6799
115.05	281°	TDZE	1606
Chan 97(Y)		Apt Elev	1624

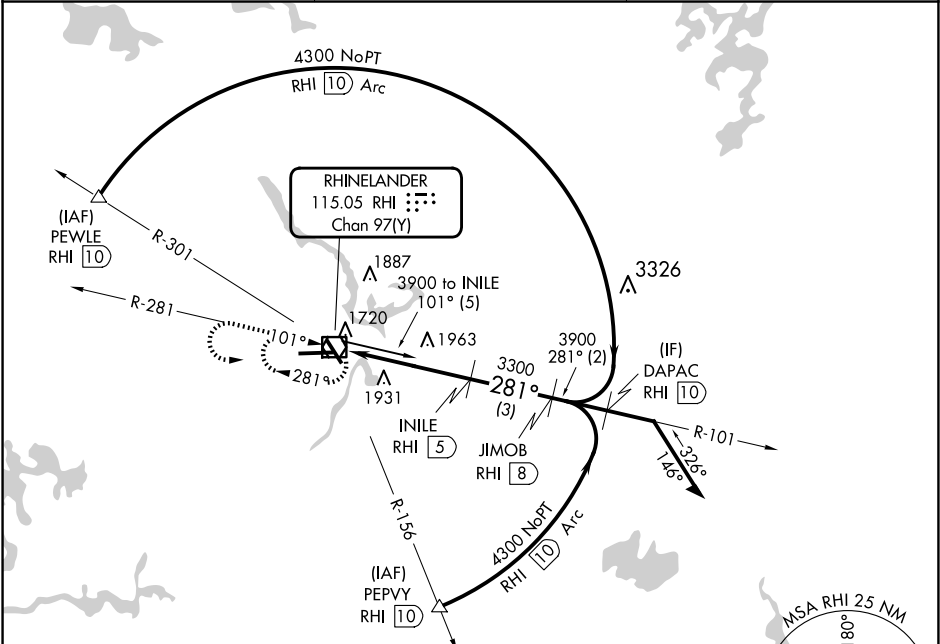
VOR/DME RWY 27

RHINELANDER/ONEIDA COUNTY(RHI)

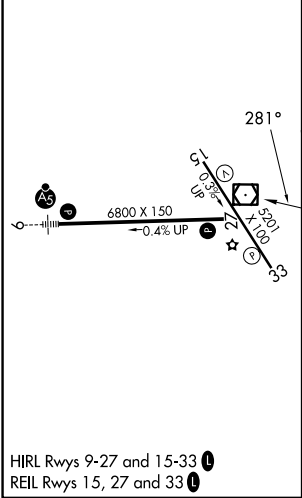
When local altimeter setting not received, use Tomahawk altimeter setting and increase all MDA 60 feet and Cat C/D visibility ¼ mile.

MISSED APPROACH: Climb to 3900 then left turn direct RHI VOR/DME and hold.

ASOS 126.825	MINNEAPOLIS CENTER 133.65 281.5	UNICOM 123.0 (CTAF)
-----------------	------------------------------------	------------------------



ELEV 1624	TDZE 1606
-----------	-----------



3900

RHI

INILE RHI 5

Remain within 10 NM

JIMOB RHI 8

101°

281°

3900

3300

3.08° TCH 50

5 NM

3 NM

CATEGORY	A	B	C	D
S-27	2220-1 614 (600-1)		2220-1 ¾ 614 (600-1 ¾)	
CIRCLING	2220-1 596 (600-1)	2260-1 636 (700-1)	2260-1 ¾ 636 (700-1 ¾)	2280-2 656 (700-2)