

WAAS CH 97715 W09A	APP CRS 091°	Rwy Ldg TDZE 1623 Apt Elev 1623
--	------------------------	---

RNAV (GPS) RWY 9

RHINELANDER/ONEIDA COUNTY (RHI)

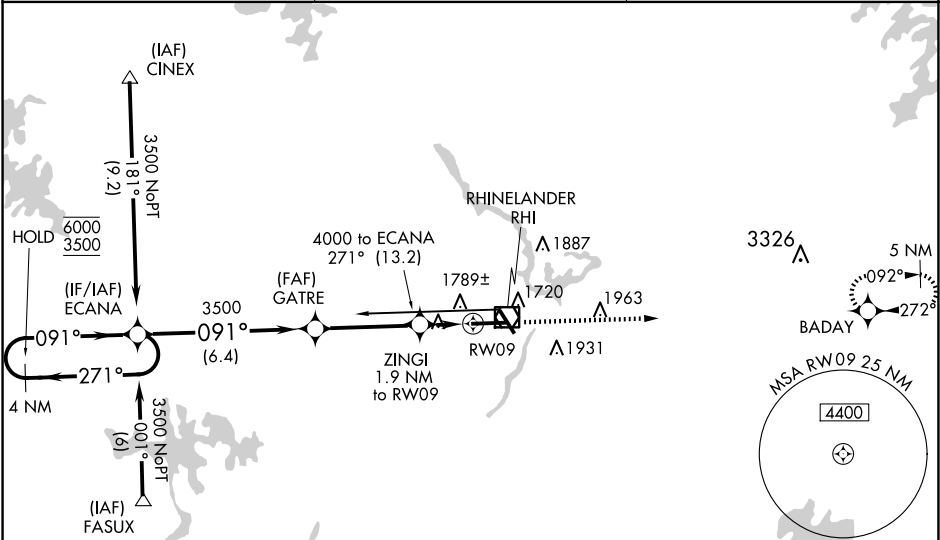
RNP APCH + GPS.

For uncompensated Baro-VNAV systems, LNAV/VNAV NA below -18°C or above 54°C. For inop ALS, increase LNAV Cats C/D visibility to 1½ SM.

MALSR

MISSED APPROACH:
Climb to 4500 direct
BADAY and hold.

ASOS 126.825	MINNEAPOLIS CENTER 133.65 281.5	UNICOM 123.0 (CTAF) 1
------------------------	---	---------------------------------



ELEV 1623 **D** TDZE 1623

4500 BADAY

091°

6800 X 150
→ 0.4% UP

5201 X 200

33

CATEGORY	A	B	C	D
LPV DA	1823-½		200 (200-½)	
LNAV/VNAV DA	2050-¾		427 (500-¾)	
LNAV MDA	2040-½	417 (500-½)	2040-¾	417 (500-¾)
C CIRCLING	2100-1 477 (500-1)	2260-1 637 (700-1)	2260-1¾ 637 (700-1¾)	2280-2 657 (700-2)

HIRL Rwy 9-27 and 15-33 **1**
REIL Rwy 15, 27 and 33 **1**