

WAAS CH 50217 W27A	APP CRS 271°	Rwy Ldg TDZE 1605 Apt Elev 1623
--	------------------------	---

RNAV (GPS) RWY 27

RHINELANDER/ONEIDA COUNTY (RHI)

RNP APCH - GPS.

▼

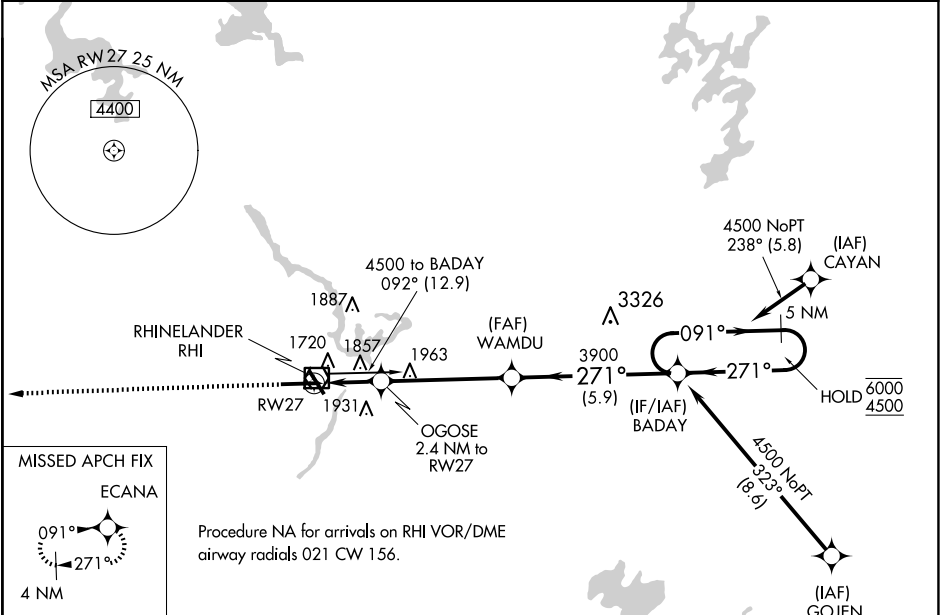
For uncompensated Baro-VNAV systems, LNAV/VNAV

▲

NA below -22°C or above 54°C.

MISSED APPROACH: Climb to 4000 direct ECANA and hold.

ASOS 126.825	MINNEAPOLIS CENTER 133.65 281.5	UNICOM 123.0 (CTAF) 0
------------------------	---	--



ELEV 1623	D	TDZE 1605
------------------	----------	------------------

4000

ECANA

271°

↑

6800 X 150

→ 0.4% UP

500

X 100

53

→

OGOSE

2.4 NM to RW27

1.5 NM to RW27

→

2420

→

3900

→

WAMDU

→

3900

→

271°

→

5.9 NM

→

5.0 NM

→

5.8 NM

→

5.0 NM

→

0.9 NM

→

0.3 NM

→

0.1 NM

→

CATEGORY	A	B	C	D
LPV DA	1805- ³ / ₄	200 (200- ³ / ₄)		
LNAV/VNAV DA	1920- ⁷ / ₈	315 (300- ⁷ / ₈)		
LNAV MDA	2120-1	515 (500-1)	2120-1 ³ / ₈	515 (500-1 ³ / ₈)
CIRCLING	2120-1 497 (500-1)	2260-1 637 (700-1)	2260-1 ³ / ₄ 637 (700-1 ³ / ₄)	2280-2 657 (700-2)

GP 3.00°

TCH 50