

APP CRS
150°

Rwy Ldg
TDZE
Apt Elev

5201
1600
1623

RNAV (GPS) RWY 15

RHINELANDER/ONEIDA COUNTY(RHI)

RNP APCH - GPS.

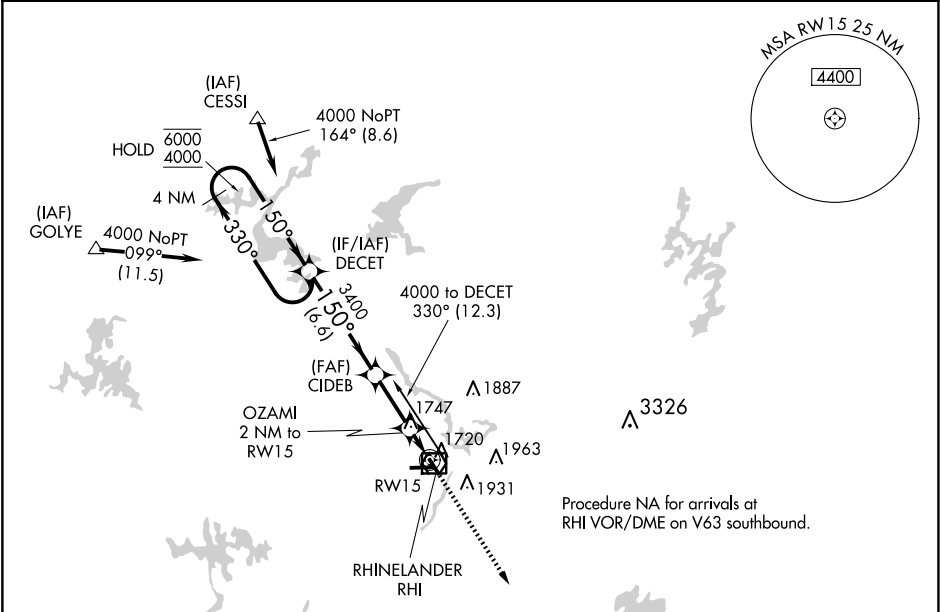
▽

▲

Rwy 15 helicopter visibility reduction below ¾ SM NA.

MISSED APPROACH:
Climb to 3500 direct
CIREN and hold.

ASOS 126.825	MINNEAPOLIS CENTER 133.65 281.5	UNICOM 123.0 (CTAF) 0
-----------------	------------------------------------	--------------------------



4 NM Holding Pattern

DECT

6000
4000

←330°
150°→

VGSI and descent
angles not coincident
(VGSI Angle 3.75/TCH 53).

3400

3.05° ≥
TCH 53

6.6 NM

3.4 NM

1.1

0.9

3500 CIREN

↑

OZAMI 2 NM to RW15

0.9 NM to RW15

RW15

2280

ELEV 1623

TDZE 1600

150°

6800 X 150

0.4% UP

330

300

270

240

210

180

150

120

90

60

30

0

330

300

270

240

210

180

150

120

90

60

30

0

330

300

270

240

210

180

150

120

90

60

30

0

CATEGORY	A	B	C	D
LNVA MDA	2000-1	400 (400-1)	2000-1½	400 (400-1½)
CIRCLING	2100-1 477 (500-1)	2260-1 637 (700-1)	2260-1¾ 637 (700-1¾)	2280-2 657 (700-2)

HIRL Rwy 9-27 and 15-33

REIL Rwy 15, 27 and 33