


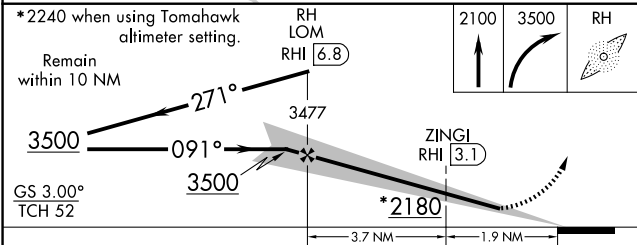
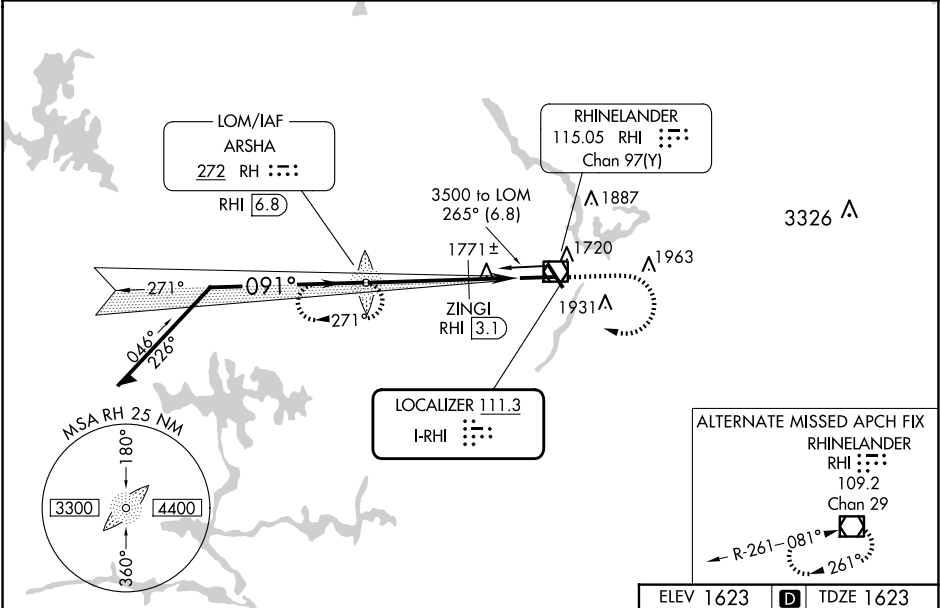


|           |         |          |      |
|-----------|---------|----------|------|
| LOC I-RHI | APP CRS | Rwy Ldg  | 6799 |
| 111.3     | 091°    | TDZE     | 1623 |
|           |         | Apt Elev | 1623 |

ILS or LOC RWY 9

RHINELANDER/ONEIDA COUNTY (RHI)

|   |                                    |  |   |
|---|------------------------------------|--|---|
| ADF or DME required.  |                                    | MALSR<br>               | MISSED APPROACH:<br>Climb to 2100 then climbing right turn to 3500 direct ARSHA LOM/RHI VOR/DME 6.8 DME and hold, continue climb-in-hold to 3500. |
|  | NA                                 |  |   |
| ** DME from RHI VOR/DME.  |                                    |  |   |
| ASOS<br>126.825   | MINNEAPOLIS CENTER<br>133.65 281.5 | UNICOM<br>123.0 (CTAF)  |   |



|           |   |           |
|-----------|---|-----------|
| ELEV 1623 | D | TDZE 1623 |
|           |   |           |