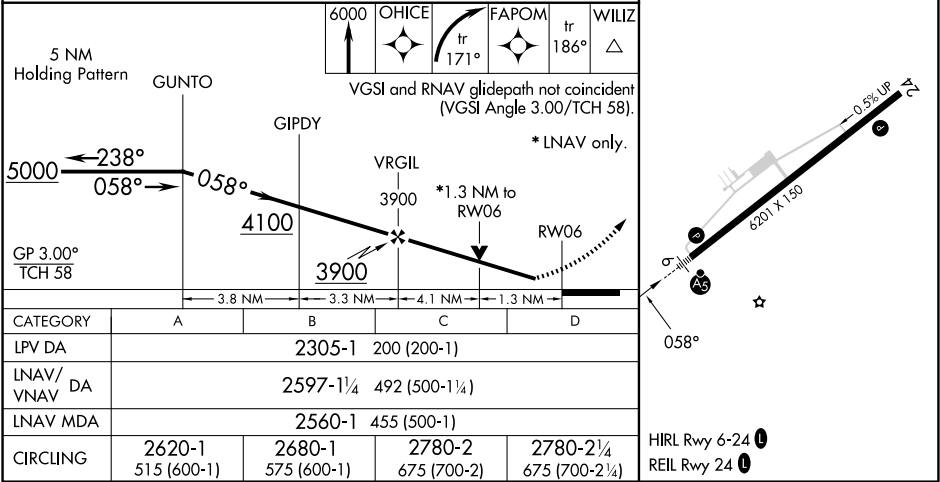
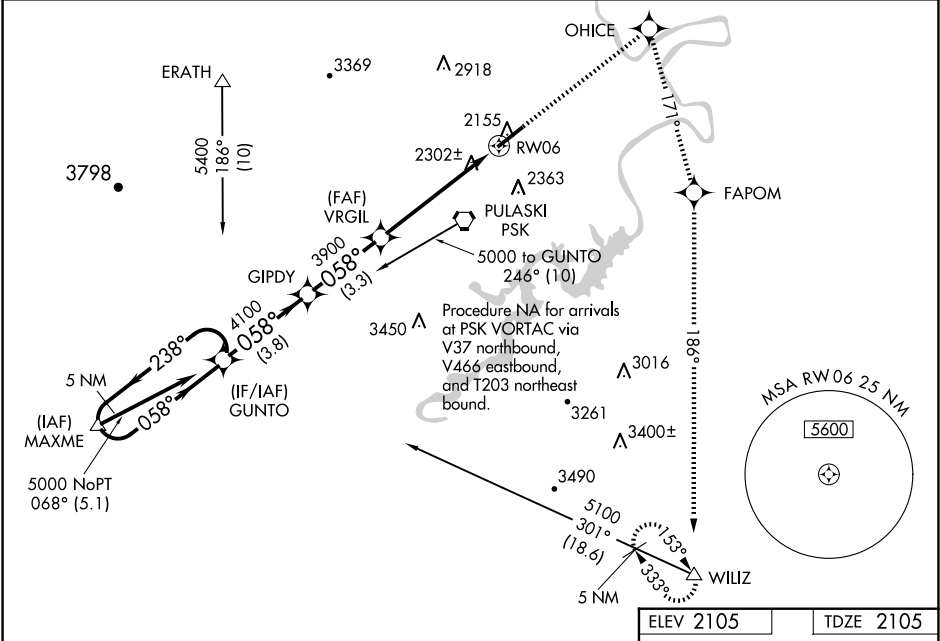


WAAS CH 87015 W06A	APP CRS 058°	Rwy Ldg TDZE Apt Elev	6201 2105 2105
--	------------------------	-----------------------------	---

RNAV (GPS) RWY 6
NEW RIVER VALLEY (PSK)

RNP APCH. For uncompensated Baro-VNAV systems, LNAV/VNAV NA below -19°C or above 44°C. When local altimeter setting not received, use Blacksburg altimeter setting and increase all DA 36 feet, and all MDA 40 feet. VDP and Baro-VNAV NA when using Blacksburg altimeter setting. Inop table does not apply to LPV all Cats and LNAV Cats A and B. For inop MALSR, increase LNAV Cat C visibility to 1¼ SM. Circling NA for Cat D northwest of Rwy 6-24.		MALSR A5	MISSED APPROACH: Climb to 6000 direct OHICE and right turn via track 171° to FAPOM and via track 186° to WILIZ and hold.
AWOS-3 127.375	ROANOKE APP CON 126.0 339.8	ROANOKE CLNC DEL 121.7	UNICOM 122.7 (CTAF)



NE-3, 10 JUL 2025 to 07 AUG 2025

NE-3, 10 JUL 2025 to 07 AUG 2025