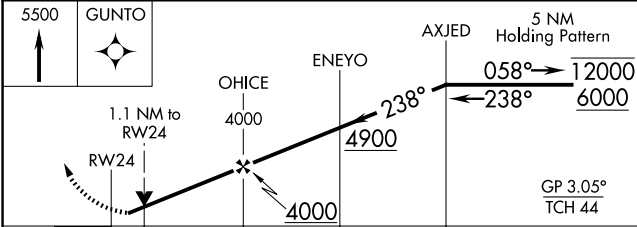
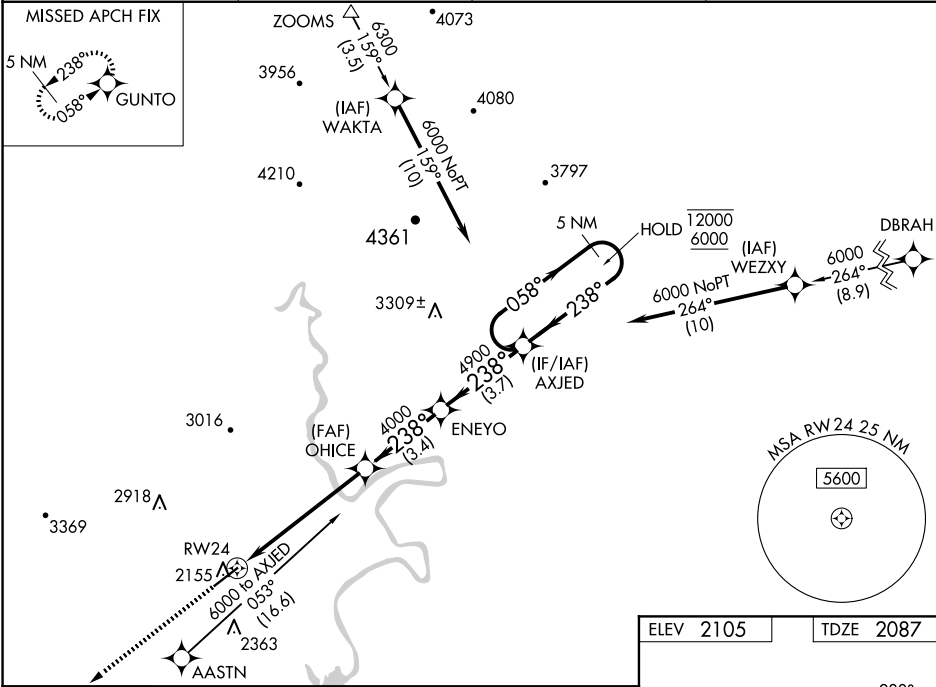


WAAS CH <b>86227</b> <b>W24A</b>	APP CRS <b>238°</b>	Rwy Ldg TDZE Apt Elev	<b>6201</b> <b>2087</b> <b>2105</b>
--	------------------------	-----------------------------	---

RNAV (GPS) RWY 24  
NEW RIVER VALLEY (PSK)

RNP APCH - GPS.	MISSED APPROACH: Climb to 5500 direct GUNTO and hold, continue climb-in-hold.
Circling NA for Cat D northwest of Rwy 6-24. For uncompensated Baro-VNAV systems, LNAV/VNAV NA below -19°C or above 54°C. Rwy 24 helicopter visibility reduction below ¾ SM NA. Baro-VNAV and VDP NA when using BCB altimeter setting.	

AWOS-3 <b>127.375</b>	ROANOKE APP CON <b>126.0 339.8</b>	ROANOKE CLNC DEL <b>121.7</b>	UNICOM <b>122.7 (CTAF) 0</b>
--------------------------	---------------------------------------	----------------------------------	---------------------------------



CATEGORY	A	B	C	D
LPV DA	2337-1	250 (300-1)		
LNAV/ VNAV DA	2502-1½	415 (400-1½)		
LNAV MDA	2480-1 393 (400-1)	2480-1½ 393 (400-1½)		
CIRCLING	2640-1 535 (600-1)	2680-1 575 (600-1)	2780-2 675 (700-2)	2780-2¼ 675 (700-2¼)

