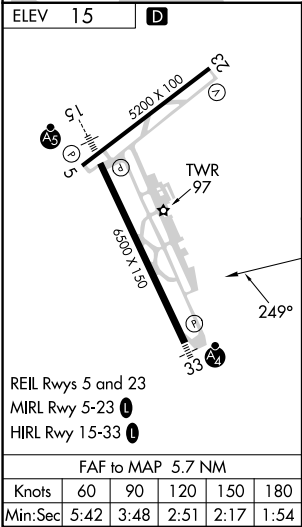
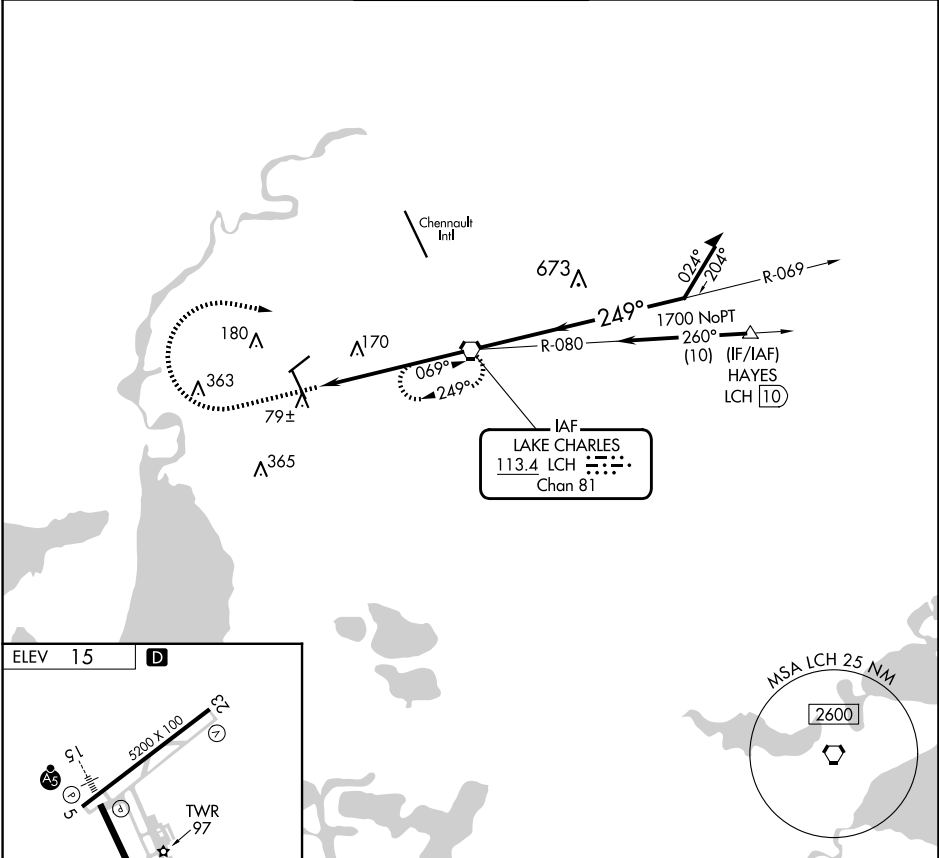


VORTAC LCH <b>113.4</b> Chan <b>81</b>	APP CRS <b>249°</b>	Rwy Idg TDZE Apt Elev <b>N/A</b> <b>N/A</b> <b>15</b>
----------------------------------------------	------------------------	----------------------------------------------------------------------

VOR-A  
LAKE CHARLES RGNL (LCH)

ASR		MISSED APPROACH: Climb to 1700 then climbing right turn to 3000 direct LCH VORTAC and hold, continue climb-in-hold 3000.			
ATIS <b>118.75</b>	LAKE CHARLES APP CON★ <b>119.35 353.75</b>	LAKE CHARLES TOWER★ <b>120.7</b> (CTAF) <b>257.8</b>	GND CON <b>121.8</b>	CLNC DEL <b>126.25</b>	UNICOM <b>122.95</b>



1700		3000		LCH		LCH VORTAC		Remain within 10 NM	
						069°		1700	
						249°		1700	
						5.7 NM			
CATEGORY		A		B		C		D	
CIRCLING		460-1 445 (500-1)		480-1 465 (500-1)		580-1½ 565 (600-1½)		680-2 665 (700-2)	

SC-4, 10 JUL 2025 to 07 AUG 2025

SC-4, 10 JUL 2025 to 07 AUG 2025