

WAAS
CH **56215**
W33A

APP CRS
332°

Rwy Ldg
TDZE
Apt Elev
6500
11
15

RNAV (GPS) RWY 33

LAKE CHARLES RGNL (LCH)

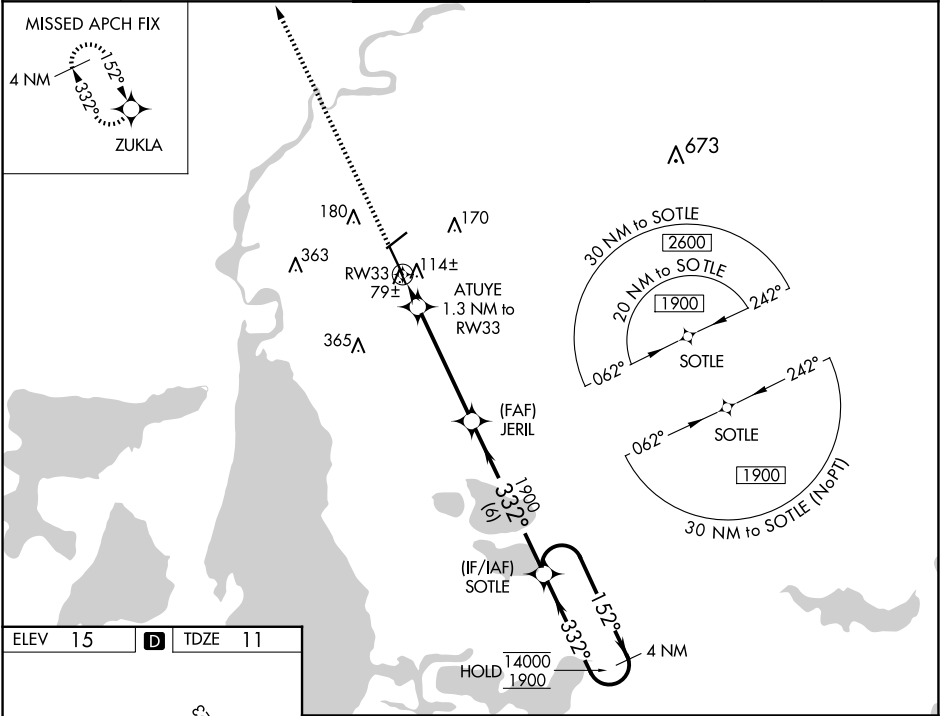
RNP APCH - GPS.

For uncompensated Baro-VNAV systems, LNAV/VNAV NA below -3°C or above 43°C. Inop table does not apply to LPV all Cats. For inop ALS, increase ASR LNAV/VNAV all Cats visibility to ½ SM.

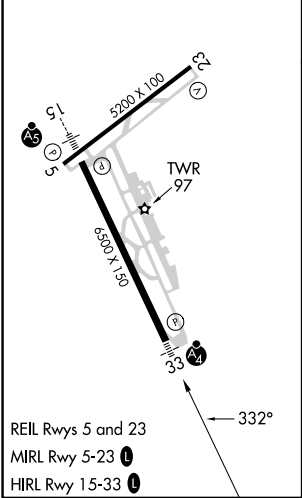
MALSFB

MISSED APPROACH: Climb to 1700 direct ZUKLA and hold.

ATIS 118.75	LAKE CHARLES APP CON★ 119.35 353.75	LAKE CHARLES TOWER★ 120.7 (CTAF) 257.8	GND CON 121.8	CLNC DEL 126.25	UNICOM 122.95
-----------------------	---	--	-------------------------	---------------------------	-------------------------



ELEV 15	D	TDZE 11
---------	---	---------



1700	ZUKLA	JERIL 1900	SOTLE	4 NM Holding Pattern
ATUYE 1.3 NM to RW33	1900	152°	14000 1900	GP 3.00° TCH 50
RW33	460	332°	332°	
1.3 NM	4.5 NM	6 NM		
CATEGORY	A	B	C	D
LPV DA		211-¾	200 (200-¾)	
LNAV/VNAV DA		296-¾	285 (300-¾)	
LNAV MDA		380-¾	369 (400-¾)	
CIRCLING	440-1 425 (500-1)	480-1 465 (500-1)	580-1½ 565 (600-1½)	680-2 665 (700-2)