

WAAS CH <b>65629</b> <b>W15A</b>	APP CRS <b>152°</b>	Rwy Ldg TDZE <b>11</b> Apt Elev <b>15</b>
--	------------------------	---

RNAV (GPS) RWY 15

LAKE CHARLES RGNL (LCH)

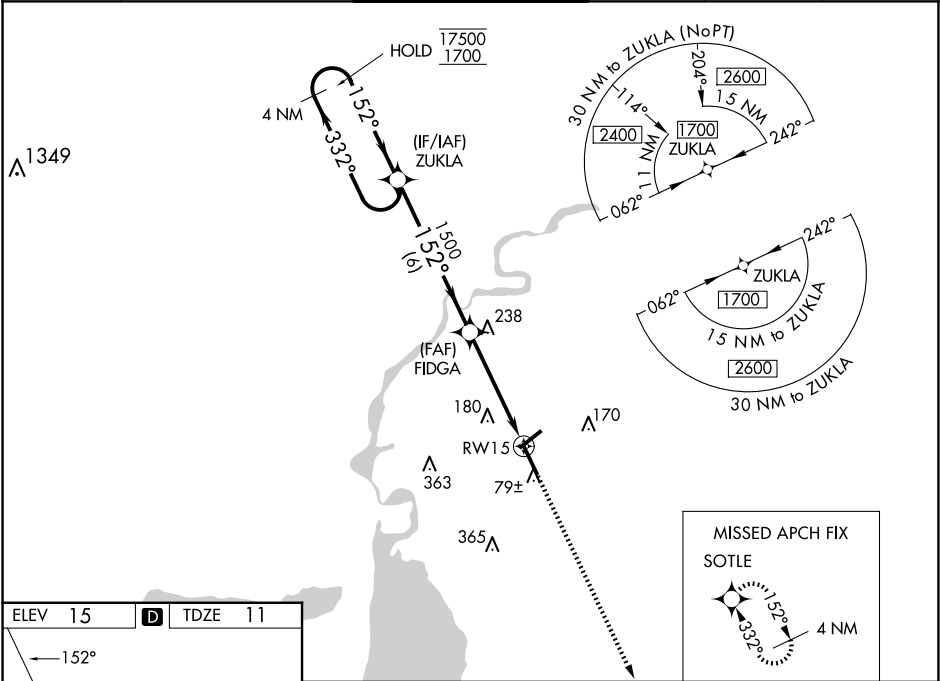
RNP APCH - GPS.

▼ For uncompensated Baro-VNAV systems, LNAV/VNAV NA below -3°C. or above 43°C.  
For inop ALS, increase LNAV/VNAV all Cats visibility to RVR 4500 and LNAV Cats C and D visibility to 1 3/8 SM.  
ASR \* RVR 1800 authorized with use of FD or AP or HUD to DA.

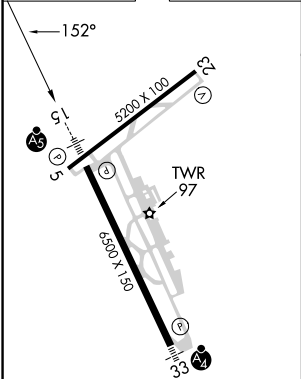
MAISR

MISSED APPROACH:  
Climb to 1900 direct  
SOTLE and hold.

ATIS <b>118.75</b>	LAKE CHARLES APP CON ★ <b>119.35 353.75</b>	LAKE CHARLES TOWER ★ <b>120.7 (CTAF) 0 257.8</b>	GND CON <b>121.8</b>	CLNC DEL <b>126.25</b>	UNICOM <b>122.95</b>
-----------------------	--	---	-------------------------	---------------------------	-------------------------



ELEV 15	D	TDZE 11
---------	---	---------



REIL Rws 5 and 23  
MIRL Rwy 5-23  
HIRL Rwy 15-33

4 NM Holding Pattern		VGSI and RNAV glidepath not coincident (VGSI Angle 3.00/TCH 70).		1900	SOTLE
ZUKLA		FIDGA		RW15	
17500 1700		1500		1.3 NM to RW15	
GP 3.00° TCH 55		1500		6 NM	
332°		152°		3.2 NM	
152°		1500		1.3	
CATEGORY	A	B	C	D	
LPV DA *	211/24		200 (200-1/2)		
LNAV/VNAV DA	300/24		289 (300-1/2)		
LNAV MDA	500/24		489 (500-1/2)		
CIRCLING	500-1		580-1 1/2		680-2
	485 (500-1)		565 (600-1 1/2)		665 (700-2)