

LOC/DME I-LCH
109.1
Chan **28**

APP CRS
152°

Rwy Idg **6500**
TDZE **12**
Apt Elev **15**

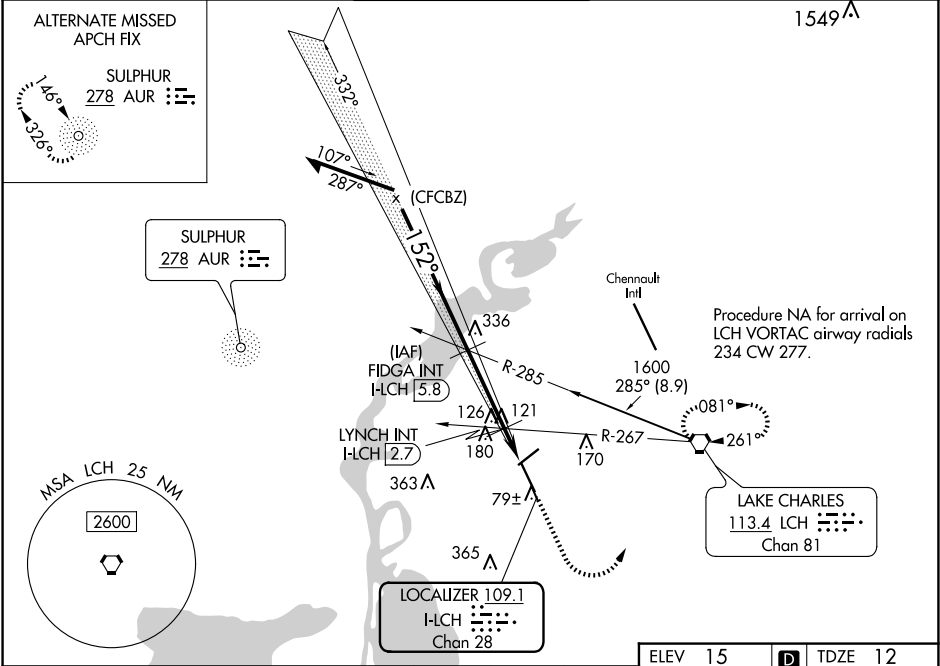
ILS or LOC RWY 15
LAKE CHARLES RGNL (LCH)

For inop ALS, increase S-LOC 15 Cats C and D visibility to 1½ mile.
* RVR 1800 authorized with use of FD or AP or HUD to DA.

MALSR
ASR

MISSED APPROACH: Climb to 1000 then climbing left turn to 2000 direct LCH VORTAC and hold, continue climb-in-hold to 2000.

ATIS 118.75	LAKE CHARLES APP CON ★ 119.35 353.75	LAKE CHARLES TOWER ★ 120.7 (CTAF) 0 257.8	GND CON 121.8	CLNC DEL 126.25	UNICOM 122.95
-----------------------	--	---	-------------------------	---------------------------	-------------------------



Remain within 10 NM

FIDGA INT I-LCH 5.8

1000 2000 LCH

1600 332° 1500 152° 1500

GS 3.00° TCH 55

VGSI and ILS glidepath not coincident (VGSI Angle 3.00/TCH 70).

LYNCH INT I-LCH 2.7

I-LCH 1.3

500

3.1 NM 1.4 NM

CATEGORY	A	B	C	D
S-ILS 15*	212/24 200 (200-½)			
S-LOC 15	500/24 488 (500-½)	500/50 488 (500-1)		
CIRCLING	500-1 485 (500-1)	580-1½ 565 (600-1½)	680-2 665 (700-2)	
LYNCH FIX MINIMUMS (DUAL VOR RECEIVERS OR DME REQUIRED)				
S-LOC 15	440/24 428 (500-½)	440/40 428 (500-¾)		
CIRCLING	440-1 425 (500-1)	480-1 465 (500-1)	580-1½ 565 (600-1½)	680-2 665 (700-2)

ELEV 15 TDZE 12

152°

5200 X 100

TWR 97

6500 X 50

REIL Rwy 5 and 23

MIRL Rwy 5-23

HIRL Rwy 15-33

FAF to MAP 4.5 NM

Knots	60	90	120	150	180
Min:Sec	4:30	3:00	2:15	1:48	1:30