

WAAS CH 53512 W10A	APP CRS 104°	Rwy Idg TDZE Apt Elev	4001 1057 1074
--	------------------------	-----------------------------	---

RNAV (GPS) Z RWY 10
MOUNT WASHINGTON RGNL (HIE)

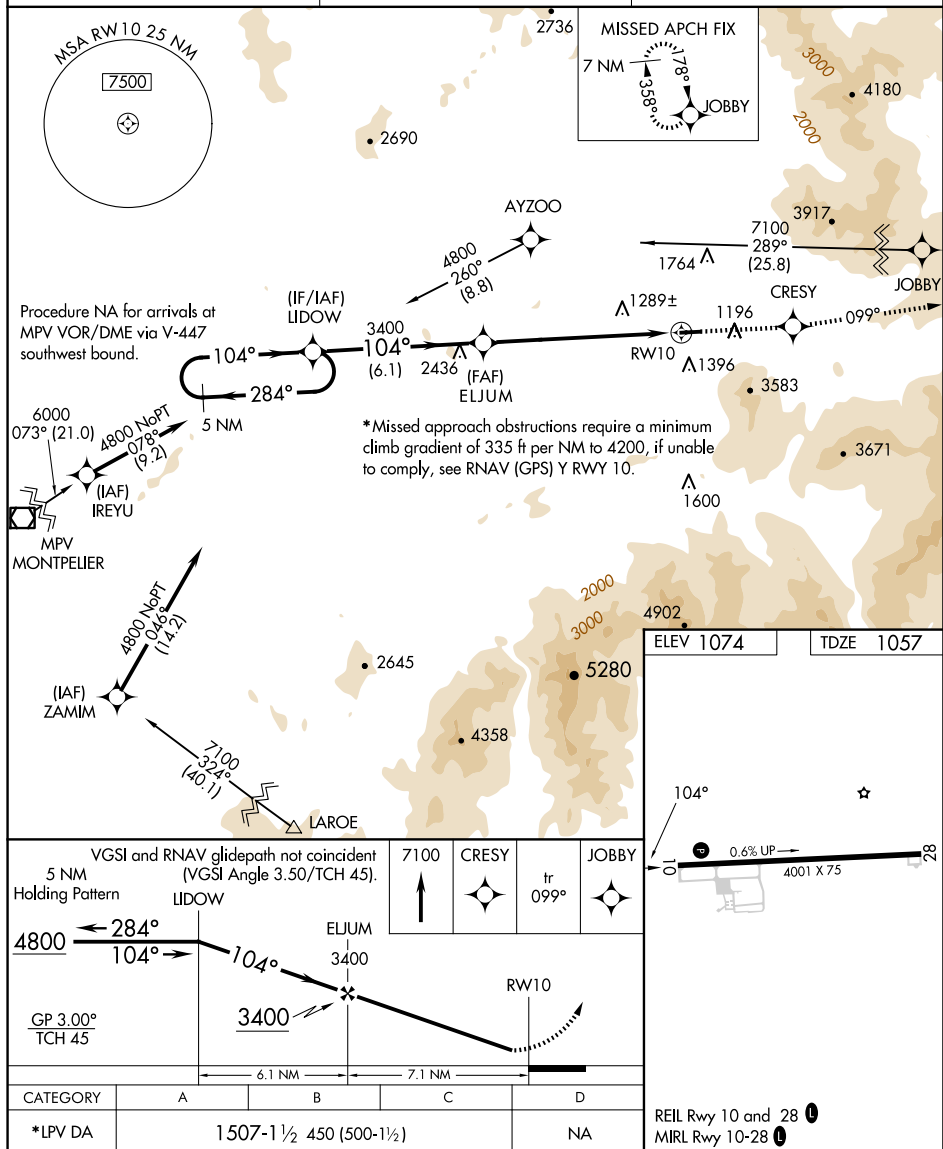
T

DME/DME RNP-0.3 NA. Visibility reduction by helicopters NA.
When local altimeter setting not received, use Lyndonville altimeter setting and increase DA 71 feet and LPV all Cats visibility ½ mile.

MISSED APPROACH: Climb to 7100 direct CRESY and via track 099° to JOBBY and hold, continue climb-in-hold to 7100.

 -29°C

ASOS 118,525	BOSTON CENTER 135.7 282.2	UNICOM 122.8 (CTAF) 0
------------------------	-------------------------------------	--



MOUNT WASHINGTON RGNL (HIE)
RNAV (GPS) Z RWY 10