




APP CRS 104°	Rwy Idg TDZE Apt Elev	4001 1057 1072
------------------------	-----------------------------	---

RNAV (GPS) Y RWY 10
MOUNT WASHINGTON RGNL (HIE)

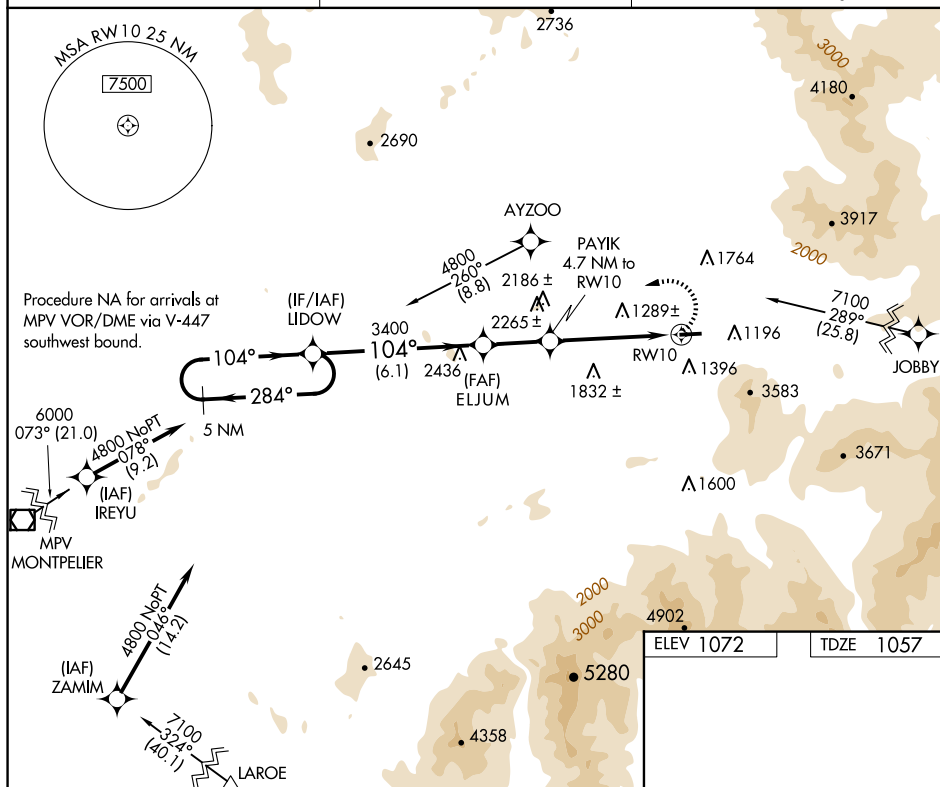
 Circling NA south of Rwy 10-28. DME/DME RNP-0.3 NA. Visibility reduction by helicopters NA. When local altimeter setting not received, use Lyndonville altimeter setting and increase all MDA 80 feet; increase LNAV and Circling Cat B/C visibilities ¼ mile. VDP NA with Lyndonville altimeter setting.

 Circling to Rwy 28 NA at night.

 -29°C

MISSED APPROACH: Climbing left turn to 4800 direct **UDOW** and hold.

ASOS 118.525	BOSTON CENTER 135.7 282.2	UNICOM 122.8 (CTAF) 0
------------------------	-------------------------------------	---------------------------------

[illegible]

MOUNT WASHINGTON RGNL (HIE)
RNAV (GPS) Y RWY 10

NE-1, 10 JUL 2025 to 07 AUG 2025