

TACAN ARH Chan <b>53</b> <b>(111.6)</b>	APP CRS <b>251°</b>	Rwy Idg <b>12001</b> TDZE <b>4629</b> Apt Elev <b>4719</b>
---	------------------------	--

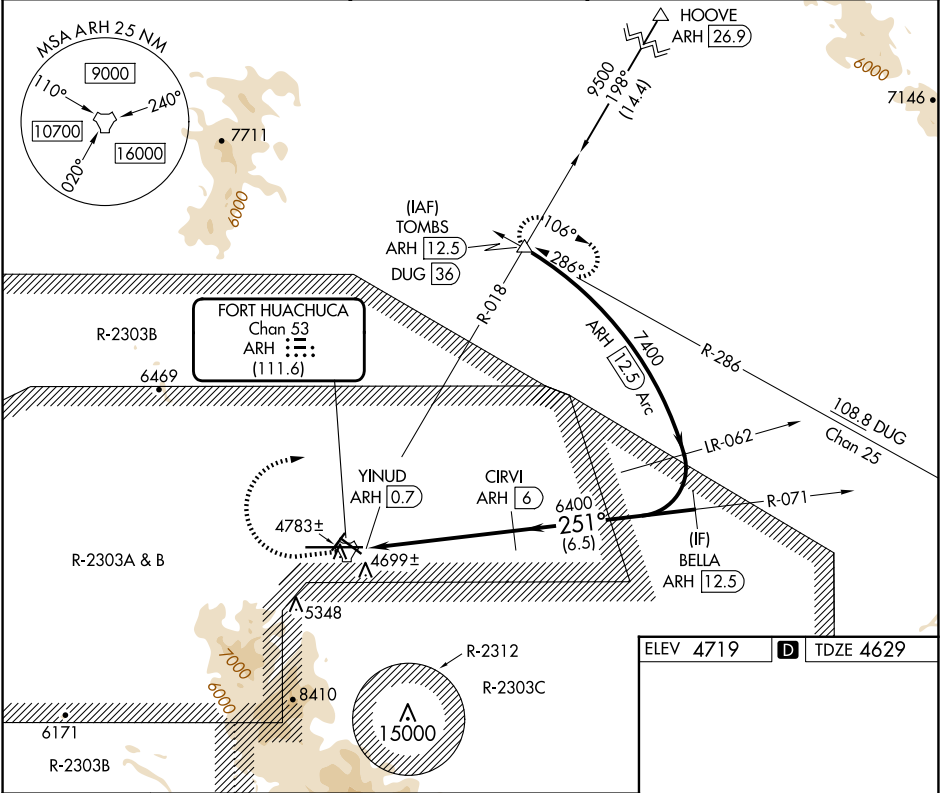
TACAN RWY 26  
SIERRA VISTA MUNI-LIBBY AAF (FHU)



Circling NA south of Rws 8 and 30.

MISSED APPROACH: Climb to 5300 then climbing right turn to 9500 on ARH R-018 to TOMBS INT/DUG 36 DME and hold.

ATIS <b>134.75 263.025</b>	LIBBY AAF GCA★ <b>127.05 254.25</b>	LIBBY TOWER★ <b>124.95 (CTAF) 284.75</b>	GND CON <b>121.7 268.7</b>	UNICOM <b>122.95</b>
-------------------------------	--	---	-------------------------------	-------------------------



5300		9500	TOMBS	VGSI and descent angles not coincident (VGSI Angle 3.00/TCH 80).		BELLA
↑		ARH	△			ARH (12.5)
R-018						
TACAN		ARH		CIRVI		
YINUD		ARH (0.7)		ARH (6)		
				≤ 3.03°		
				TCH 51		
				251°		
				7400		
				6400		
				0.2 1.2 NM 4.1 NM 6.5 NM		
CATEGORY	A	B	C	D	E	
S-26	5100-1	471 (400-1)	5100-1¼ 471 (400-1¼)	5100-1½ 471 (400-1½)	5100-1¾ 471 (400-1¾)	
CIRCLING	5160-1 441 (500-1)	5180-1 461 (500-1)	5180-1½ 461 (500-1½)	5280-2	561 (600-2)	

