

VOR/DME SBJ	APP CRS	Rwy Idg	1923
112.9	061°	TDZE	106
Chan 76		Apt Elev	106

VOR RWY 8

SOMERSET (SMQ)

▼

▲

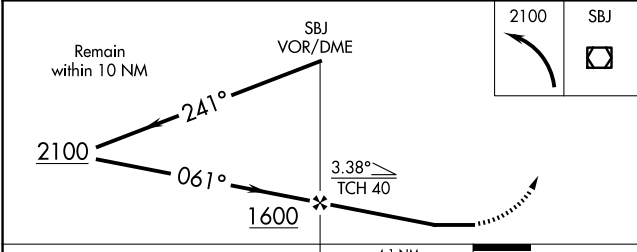
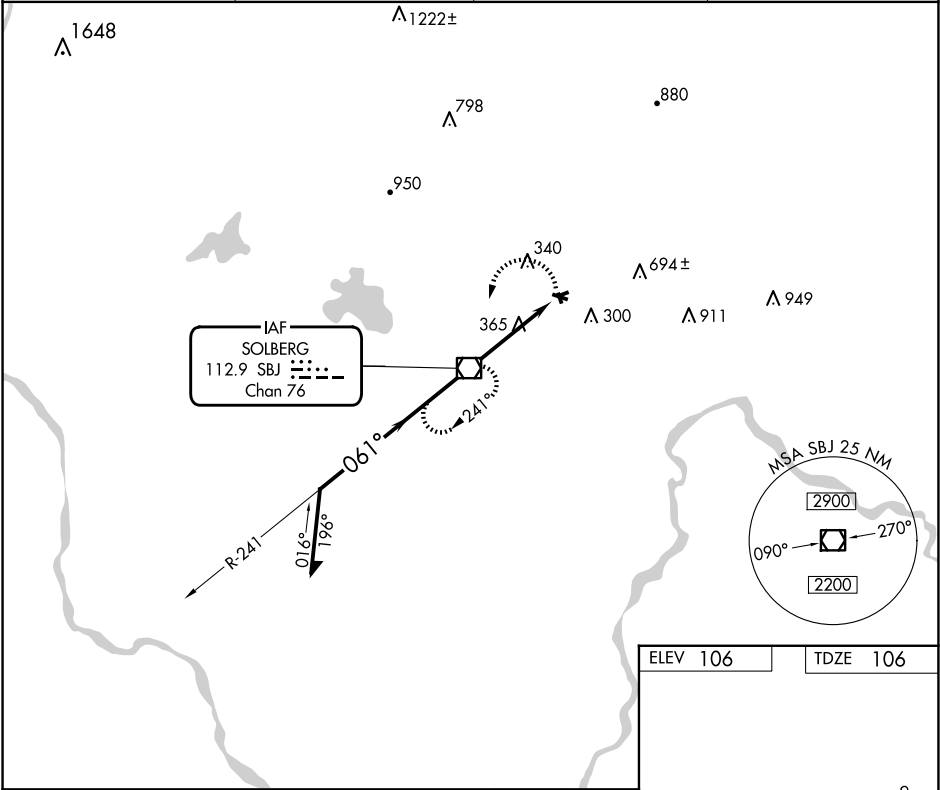
Circling Rwy 8, 17, 26, 30 and 35 NA at night.

Rwy 8 helicopter visibility reduction below 1 SM NA.

Straight-in Rwy 8 NA at night.

MISSED APPROACH: Climbing left turn to 2100 direct SBJ VOR/DME and hold.

ASOS	NEWARK APP CON	UNICOM	118.325 0
120.6	132.8 379.9	123.0 (CTAF)	



CATEGORY	A	B	C	D
S-8	700-1	594 (600-1)	NA	
CIRCLING	700-1 594 (600-1)	960-1¼ 854 (900-1¼)	NA	

ELEV 106

TDZE 106

REIL Rwys 12 and 30 0

MIRL Rwy 12-30 0

FAF to MAP 4.1 NM

Knots	60	90	120	150	180
Min:Sec	4:06	2:44	2:03	1:38	1:22

NE-2, 10 JUL 2025 to 07 AUG 2025

NE-2, 10 JUL 2025 to 07 AUG 2025