
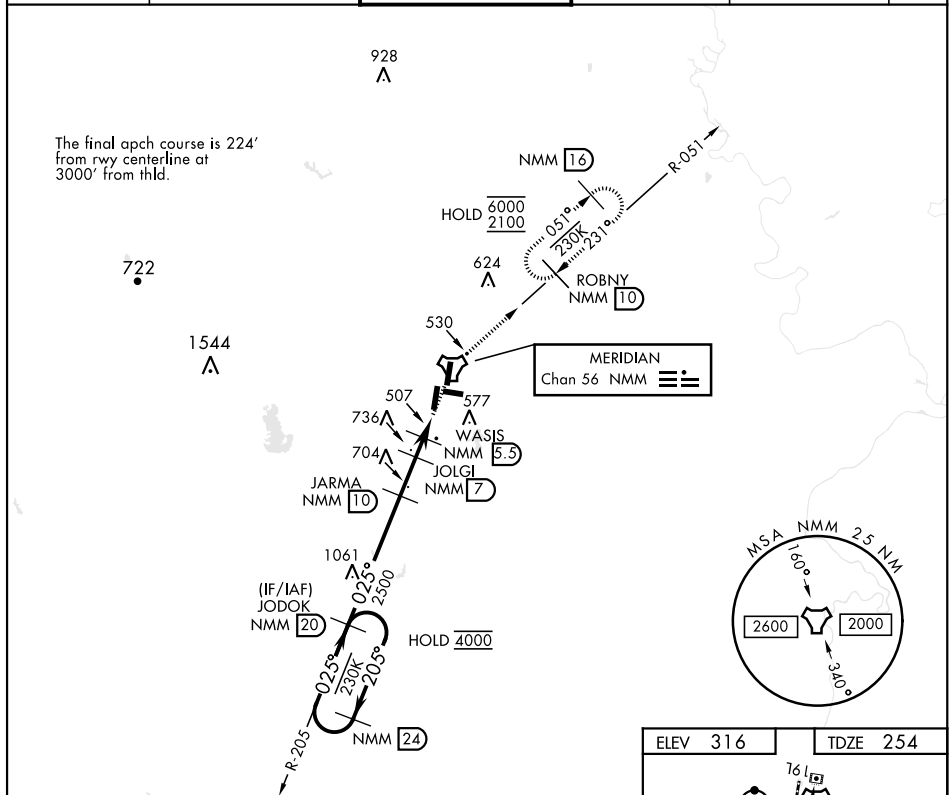
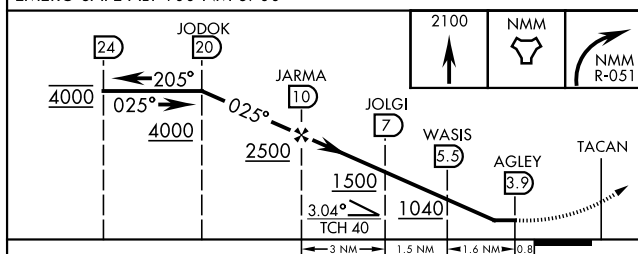


TACAN Y RWY 1L

TACAN NMM Chan 56	APCH CRS 025°	Rwy Idg 8003 TDZE 254 Arpt Elev 316	AL-5079 [USN]	MERIDIAN NAS (MC CAIN FIELD) (KNMM)		
RADAR required. ▼ * When ALS inop, increase CAT AB vis to 1 mile; CAT CDE vis to 1 1/2 miles.			ALSF-1 	MISSED APPROACH: Climb to 2100 direct NMM TACAN then via R-051 to ROBNY and hold.		
ATIS ★ 290.525	APP CON 120.95 276.4	NAVY MC CAIN TOWER ★ 126.2 340.2		GND CON 336.4	CLNC DEL 301.0	ASR/ PAR



EMERG SAFE ALT 100 NM 3700



CATEGORY	A	B	C	D	E
S-1L*	760-½	506 (500-½)	760-1	506 (500-1)	
CIRCLING	820-1 504 (600-1)	840-1 524 (600-1)	840-1½ 524 (600-½)	880-2 564 (600-2)	1080-2¾ 764 (800-2¾)

