

MERIDIAN, MISSISSIPPI

RNAV (GPS) RWY 1L

APCH CRS	Rwy Idg	8003
011°	TDZE	254
	Arprt Elev	316

AL-5079 (USN)

MERIDIAN NAS (MC CAIN FLD) (KNMM)

RNP APCH.

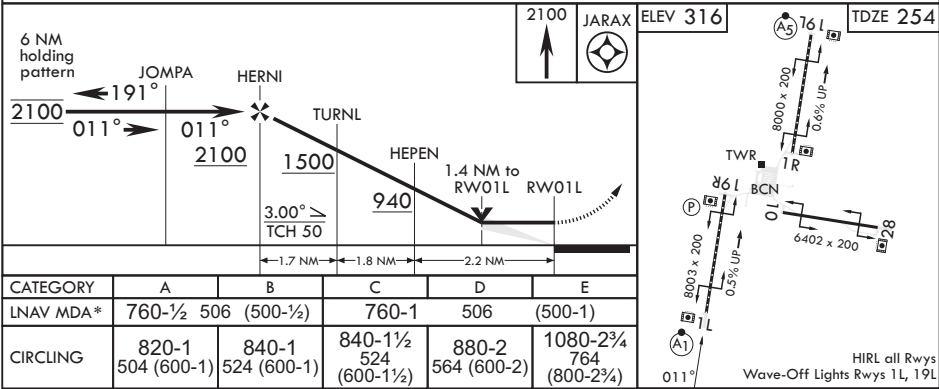
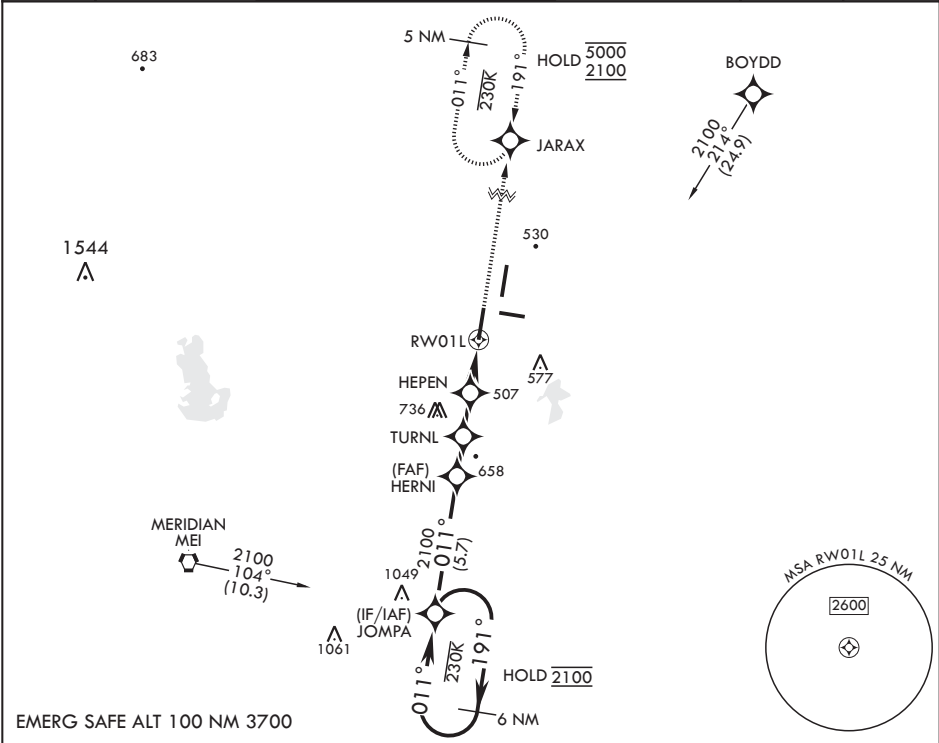
▼ * When ALS inop, increase CAT A/B vis to 1 mile, CAT C/D to 1 3/8 miles.

ALSF-1



MISSED APPROACH: Climb to 2100 direct JARAX and hold.

ATIS★ 290.525	APP CON 120.5 269.325 S 379.275 N 120.95 276.4 W 121.275 348.7 E	MC CAIN TOWER★ 126.2 340.2 RWY 01L, 19L AND 28 126.2 360.2 RWY 01R, 19R AND 10	MC CAIN GND CON 336.4	CLNC DEL 301.0	ASR/PAR
------------------	--	--	--------------------------	-------------------	---------



MERIDIAN, MISSISSIPPI

32°33'N - 88°33'W

MERIDIAN NAS (MC CAIN FLD) (KNMM)

Amtr 4 08SEP22

RNAV (GPS) RWY 1L

SC-4, 10 JUL 2025 to 07 AUG 2025

SC-4, 10 JUL 2025 to 07 AUG 2025