
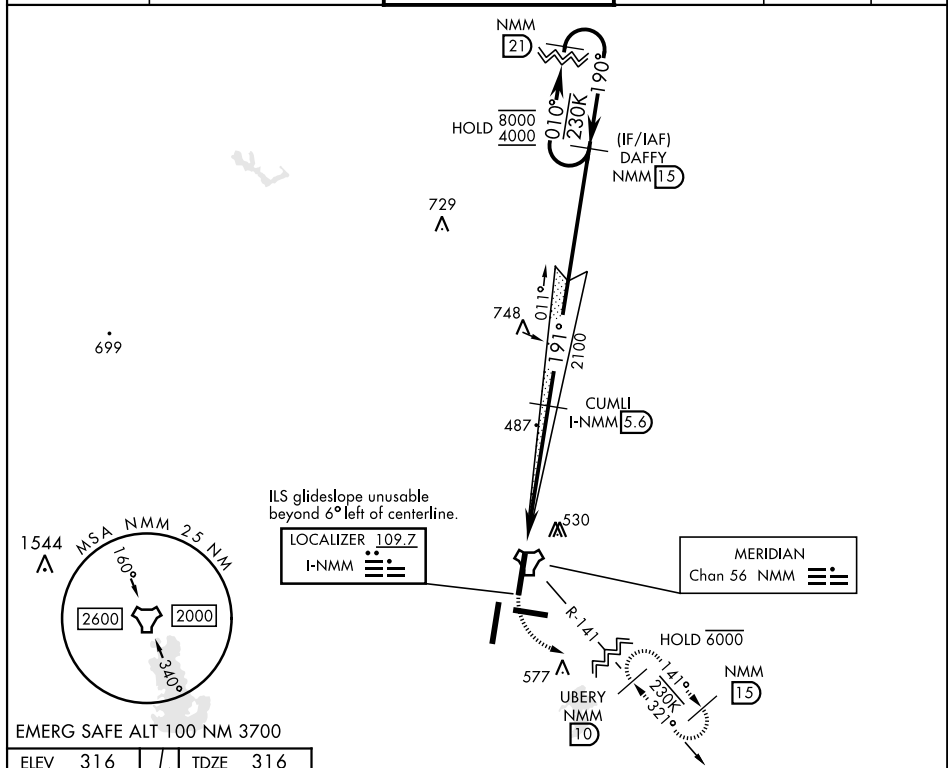


ILS Y or LOC/DME Y RWY 19L

LOC I-NMM 109.7	APCH CRS 191°	Rwy Idg 8000 TDZE 316 Arprt Elev 316	AL-5079 [USN]	MERIDIAN NAS (MC CAIN FIELD) (KNMM)			
RADAR required. ▼ * When ALS inop, increase vis to ¾ mile. ** When ALS inop, increase CAT AB vis to 1 mile, CAT CD vis to 1½ miles.			MALSR 	MISSED APPROACH: Climb to 800, then climbing left turn to 2100 to intercept NMM R-141 to UBERY and hold.			
ATIS ★ 290.525	APP CON 120.95 276.4		NAVY MC CAIN TOWER ★ 126.2 340.2		GND CON 336.4	CLNC DEL 301.0	ASR/PAR



EMERG SAFE ALT 100 NM 3700

Figure 10: Example of a 4th Class Instrument Approach Chart

The chart displays the approach procedure for Runway 19L, including the approach path, missed approach, and circling approach. Key features include:

- Approach Path:** A 4.9 NM approach with a 191° heading.
- Missed Approach:** A 1.3 NM climb to 2100 feet.
- Circling Approach:** A 0.7 NM climb to 2100 feet.
- Obstacles:** Obstacles are shown with their MSL and AGL elevations, and their distance from the approach path.
- Navigation Aids:** The chart includes the TACAN and FAXAR NMM (0.7 NM) and the UBERY NMM (1.0 NM).
- Communication:** The chart includes the frequency for the Tower (TWR) and the Unicom (UNICOM).
- Chart Data:**

Category	A	B	C	D
S-ILS 19L *	516-½	200	(200-½)	
S-LOC 19L **	740-½	424 (500-½)	740-¾	424 (500-¾)
Circling	820-1	840-1	840-1 ½	880-2
	504 (600-1)	524 (600-1)	524 (600-1 ½)	564 (600-2)

MERIDIAN, MISSISSIPPI

32°33'N-88°33'W

MERIDIAN NAS (MC CAIN FIELD) (KNMM)

ILS Y or LOC/DME Y RWY 19L

SC-4, 10 JUL 2025 to 07 AUG 2025

SC-4, 10 JUL 2025 to 07 AUG 2025