

MERIDIAN, MISSISSIPPI

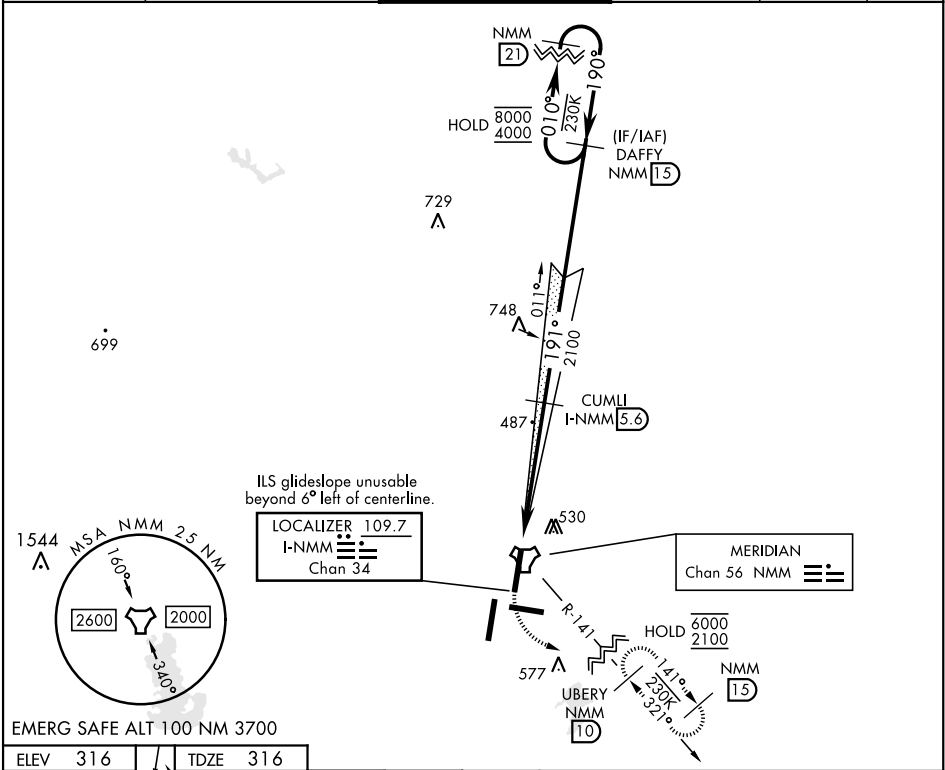
ILS W or LOC/DME W RWY 19L

LOC/DME I-NMM 109.7 Chan 34	APCH CRS 191°	Rwy Idg TDZE Arpt Elev 8000 316 316
---	-------------------------	---

AL-5079 [USN]

MERIDIAN NAS (MC CAIN FIELD) (KNMM)

RADAR required		<div>MALSR</div> <div><div>A5</div><div>-----</div><div>-----</div><div>-----</div><div>-----</div></div>	MISSED APPROACH: Climb to 800, then climbing left turn to 2100 to intercept NMM R-141 to UBERY and hold.			
<div>▼</div>	<div>* When ALS inop, increase vis to ¾ mile.</div> <div>** When ALS inop, increase CAT AB vis to 1 mile, CAT CD vis to 1½ miles.</div>					
ATIS ★ 290.525	APP CON 120.95 276.4	NAVY MC CAIN TOWER★ 126.2 340.2		GND CON 336.4	CINC DEL 301.0	ASR/PAR



MERIDIAN, MISSISSIPPI

32°33'N-88°33'W

MERIDIAN NAS (MC CAIN FIELD) (KNMM)

Orig 01DEC22

ILS W or LOC/DME W RWY 19L

SC-4, 10 JUL 2025 to 07 AUG 2025

SC-4, 10 JUL 2025 to 07 AUG 2025