

HI-TACAN Z RWY 1L

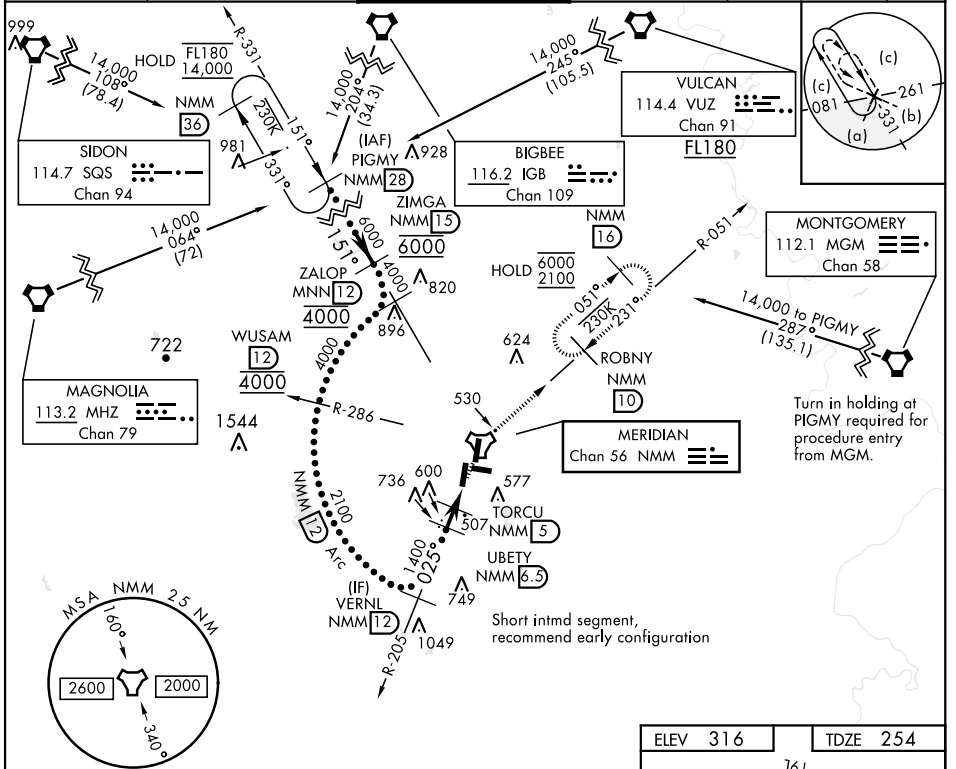
TACAN Chan 56	NMM 025°	APCH CRS 025°	Rwy Idg TDZE Arpt Elev 8003 254 316	AL-5079 [USN]	MERIDIAN NAS (MC CAIN FIELD) (KNMM)
-------------------------	--------------------	-------------------------	--	---------------	-------------------------------------

▲ * When ALS inop, increase vis to 1½ miles.

ALSF-1

MISSED APPROACH: Climb to 2100 via NMM R-205 to NMM TACAN then via R-051 to ROBNY and hold.

ATIS ★ 290.525	APP CON 120.95 276.4	NAVY MC CAIN TOWER ★ 126.2 340.2	GND CON 336.4	CLNC DEL 301.0	ASR/ PAR
--------------------------	--------------------------------	--	-------------------------	--------------------------	-------------



EMERG SAFE ALT 100 NM 3700

PIGMY	ZIMGA	ZALOP	WUSAM	VERNL	UBETY	TORCU	SIKUE	TACAN
28	15	12	12	12	6.5	5	4	

2100	NMM	ROBNY
NMM R-205	NMM 4.5	NMM R-051
10		10

CATEGORY	C	D	E
S-1L *	760-1	506 (500-1)	
CIRCLING	840-1½ 524 (600-1½)	880-2 564 (600-2)	1080-2¾ 764 (800-2¾)

ELEV 316 TDZE 254

Wave-Off Lgt Rwy 1L, 19L
HIRL all rwys

HI-TACAN Z RWY 1L