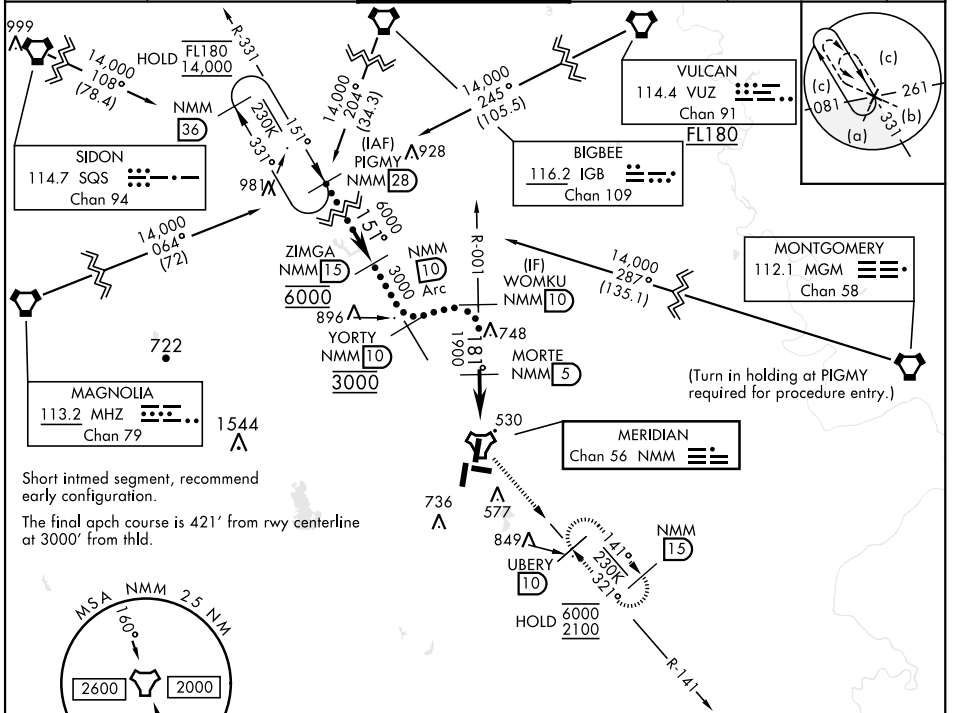


TACAN NMM Chan 56	APCH CRS 181°	Rwy Idg TDZE Arpt Elev 8000 316 316	AL-5079 [USN]	MERIDIAN NAS (MC CAIN FIELD) (KNMM)
----------------------	------------------	--	---------------	-------------------------------------

DME required.	MALSR (A5)	MISSED APPROACH: Climb to 2100 via NMM R-001 to TACAN then via R-141 to UBERY and hold.
---------------	---------------	---

ATIS ★ 290.525	APP CON 120.95 276.4	NAVY MC CAIN TOWER ★ 126.2 340.2	GND CON 336.4	CLNC DEL 301.0	ASR/ PAR
-------------------	-------------------------	-------------------------------------	------------------	-------------------	-------------



EMERG SAFE ALT 100 NM 3700	PIGMY (28)	ZIMGA (15)	YORTY (10)	WOMKU (10)	MORTY (5)	UBERY (10)	TACAN (1.5)	VERTC (0.7)
14,000	6000	3000	2700	1900	1900	2100	2100	2100
181°	340°	100°	250°	181°	340°	181°	340°	181°
3.00° TCH 50	4.3 NM	0.5	0.5	0.5	0.5	0.5	0.5	0.5
CATEGORY	C	D	E					
S-19L *	780-1	464	(500-1)					
CIRCLING	840-1½ 524 (600-1½)	880-2 564 (600-2)	1080-2¾ 764 (800-2¾)					

SC-4, 10 JUL 2025 to 07 AUG 2025

SC-4, 10 JUL 2025 to 07 AUG 2025