

# HI-ILS Z or LOC/DME Z RWY 19L

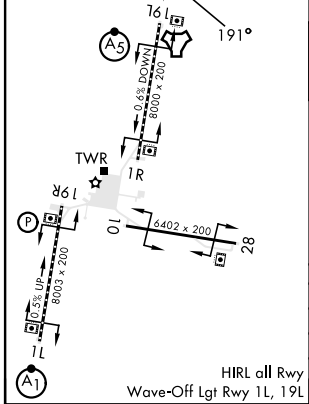
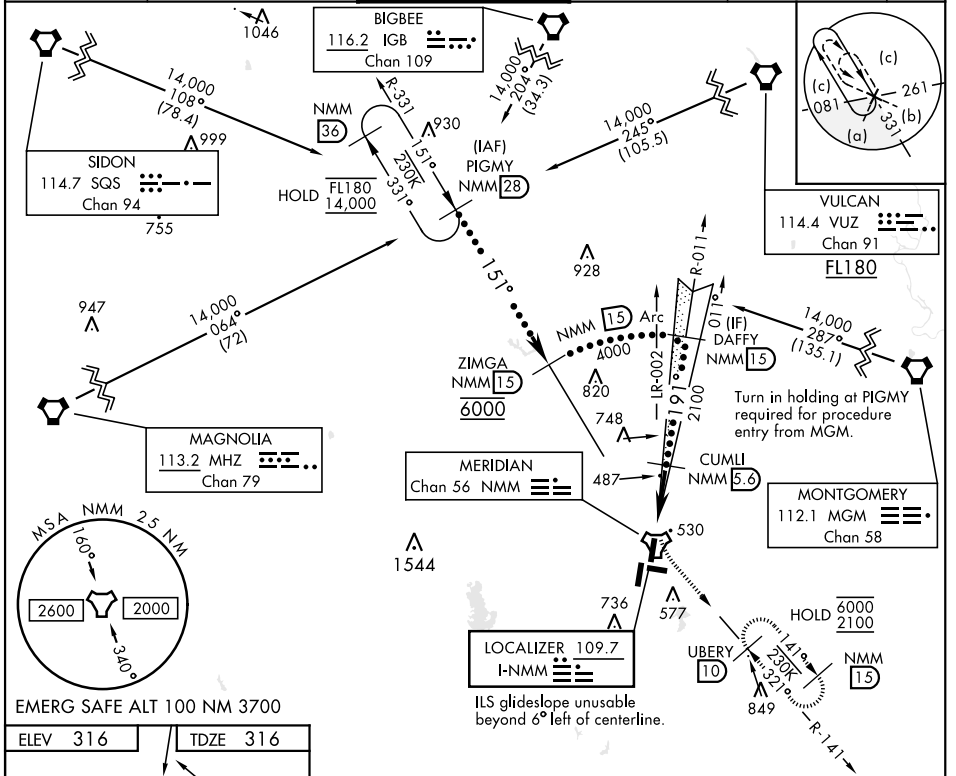
LOC I-NMM <b>109.7</b>	APCH CRS <b>191°</b>	Rwy Idg TDZE Arpt Elev <b>8000</b> <b>316</b> <b>316</b>	AL-5079 [USN]	MERIDIAN NAS (MC CAIN FIELD) (KNMM)
---------------------------	-------------------------	---	---------------	-------------------------------------

**⚠** \*When ALS inop, increase vis to  $\frac{3}{4}$  mile.  
\*\*When ALS inop, increase vis to  $1\frac{1}{4}$  miles.

MALSR  
**(A5)**

MISSED APPROACH: Climb to 800 then climbing left turn to 2100 intercept NMM R-141 to UBERY and hold.

ATIS ★ <b>290.525</b>	APP CON <b>120.95 276.4</b>	NAVY MC CAIN TOWER ★ <b>126.2 340.2</b>	GND CON <b>336.4</b>	CLNC DEL <b>301.0</b>	ASR/ PAR
--------------------------	--------------------------------	--	-------------------------	--------------------------	-------------



800	2100	UBERY 10	PIGMY 28
NMM R-141		DAFY 15	ZIMGA 15
TACAN		CUMLI 5.6	14,000
FAXAR 0.7		2100	6000
0.5		4.9 NM	GS 3.00° TCH 49
CATEGORY	C	D	E
S-ILS 19L *	516- $\frac{1}{2}$	200	(200- $\frac{1}{2}$ )
S-LOC 19L **	740- $\frac{3}{4}$	424	(500- $\frac{3}{4}$ )
CIRCLING	840-1 $\frac{1}{2}$ 524 (600-1 $\frac{1}{2}$ )	880-2 564 (600-2)	1080-2 $\frac{3}{4}$ 764 (800-2 $\frac{3}{4}$ )

# HI-ILS Z or LOC/DME Z RWY 19L



SC-4, 10 JUL 2025 to 07 AUG 2025

SC-4, 10 JUL 2025 to 07 AUG 2025