

HI-ILS X or LOC/DME X RWY 19L

LOC/DME I-NMM 109.7 Chgn 34	APCH CRS 191°	Rwy Idg 8000 TDZE 316 Arpt Elev 316
---	-------------------------	--

[USN]

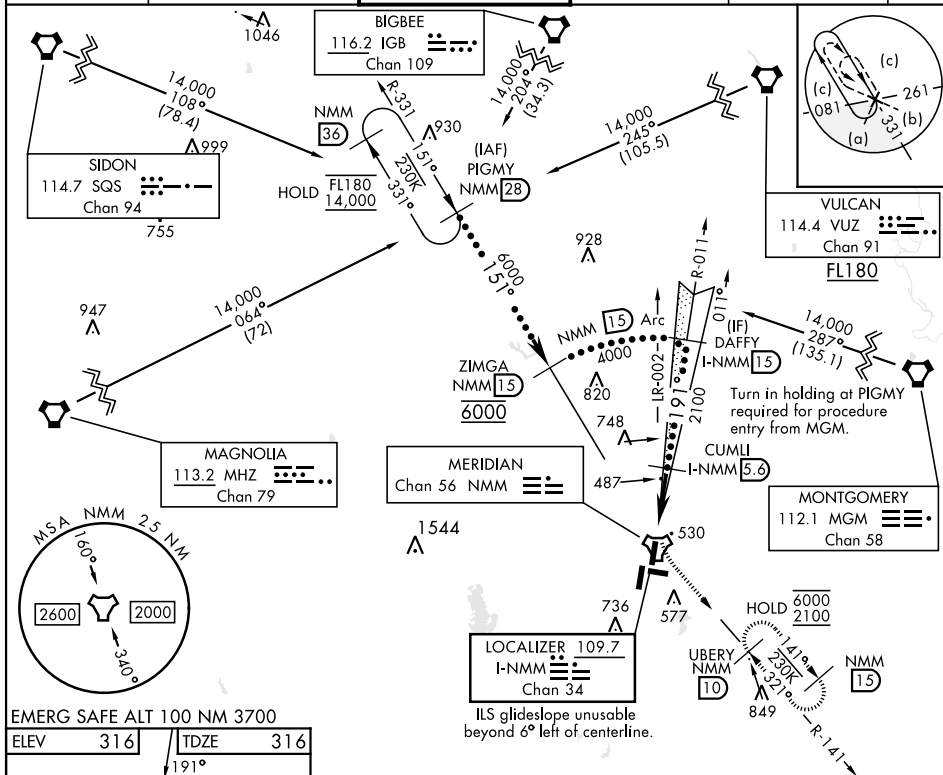
MERIDIAN NAS (MC CAIN FIELD) (KNMM)

T * When ALS inop, increase vis to $\frac{3}{4}$ mile.
 ** When ALS inop, increase vis to $1\frac{1}{4}$ miles.



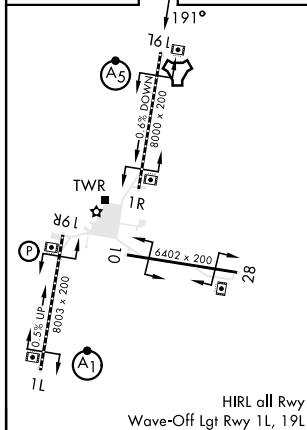
MISSED APPROACH: Climb to 800 then climbing left turn to 2100 intercept NMM R-141 to UBERY and hold.

ATIS ★ 290.525	APP CON 120.95 276.4	NAVY MC CAIN TOWER ★ 126.2 340.2	GND CON 336.4	CLNC DEL 301.0	ASR/ PAR
-------------------	-------------------------	-------------------------------------	------------------	-------------------	-------------



EMERG SAFE ALT 100 NM 3700

ELEV	316	/	TDZE	316
------	-----	---	------	-----



800 ↑	2100 NMM R-141	UBERY 10	CUMLI I-NMM 5.6	DAFFY I-NMM 15	ZIMGA NMM 15	PIGMY NMM 28	14,000
	I-NMM 1.4		191°	4000	6000	151°	
	FAXAR I-NMM 0.7		2100	15 Arc			GS 3.00° TCH 49
0.5	4.9 NM						
CATEGORY	C	D	E				
S-ILS 19L *	516-½	200	(200-½)				
S-LOC 19L **	740-¾	424	(500-¾)				
CIRCLING	840-1½ 524 (600-1½)	880-2 564 (600-2)	1080-2¾ 764 (800-2¾)				

MERIDIAN, MISSISSIPPI

32° 33' N -88° 33' W

MERIDIAN NAS (MC CAIN FIELD) (KNMM)

HI-ILS X or LOC/DME X RWY 19L

Orig 01DEC22

SC-4, 10 JUL 2025 to 07 AUG 2025