

VORTAC BAE 116.4 Chan 111	APP CRS 153°	Rwy Idg TDZE Apt Elev N/A N/A 911	VOR-A WAUKESHA COUNTY (UES)
---	------------------------	---	---------------------------------------

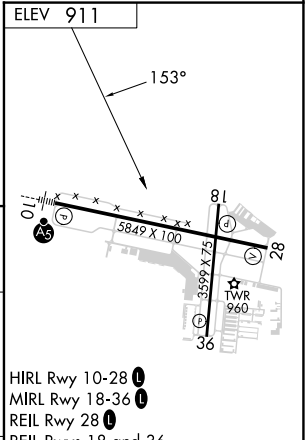
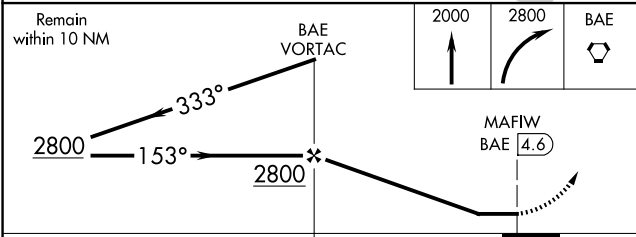
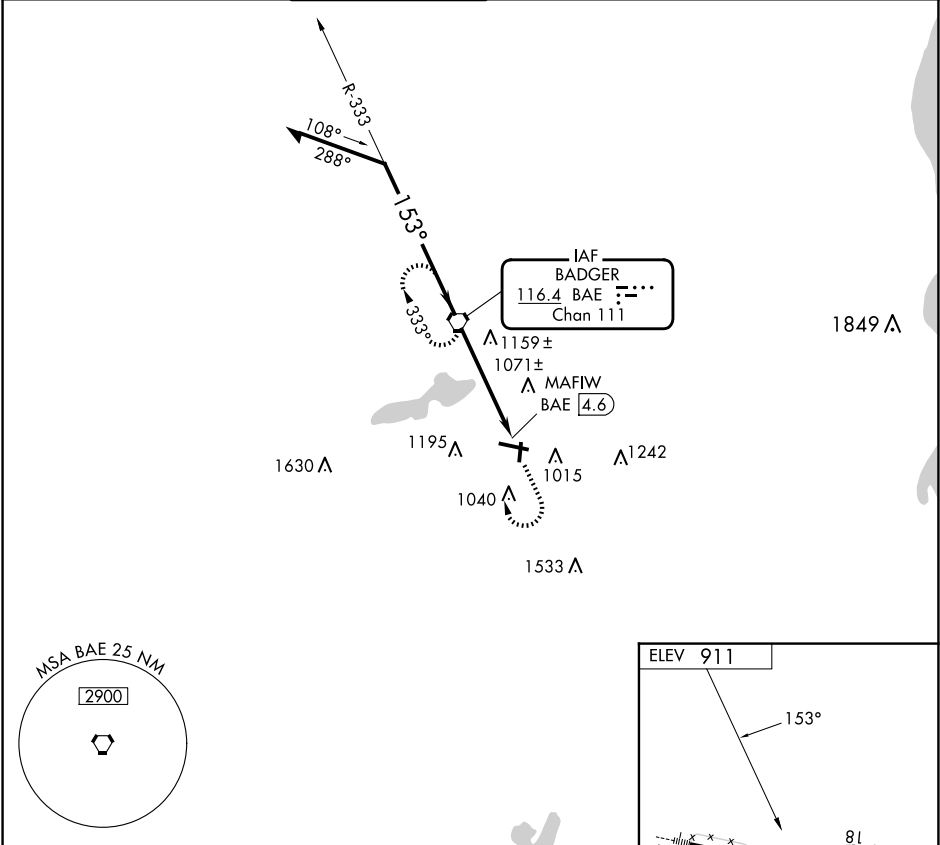
▼

▲

When local altimeter setting not received, use Lawrence J Timmerman altimeter setting; increase all MDAs 60 feet and increase Circling Cat C and D visibility ¼ SM.

MISSED APPROACH: Climb to 2000, then climbing right turn to 2800 direct BAE VORTAC and hold.

ATIS 118.875	MILWAUKEE APP CON 125.35 307.0	WAUKESHA TOWER ★ 123.7 (CTAF) 0	GND CON 121.6	CLNC DEL 121.6	CLNC DEL 128.7 (When twr closed)	UNICOM 122.95
------------------------	--	--	-------------------------	--------------------------	---	-------------------------



			<div><div></div><div>4.6 NM</div></div>		KEIL Rwy's 18 and 36					
CATEGORY	A	B	C	D	FAF to MAP 4.6 NM					
CIRCLING	1460-1 549 (600-1)	1500-1 589 (600-1)	1540-1¾ 629 (700-1¾)	1640-2¼ 729 (800-2¼)	Knots	60	90	120	150	180
					Min:Sec	4:36	3:04	2:18	1:50	1:32