

|  |                        |  |
|--|------------------------|--|
| WAAS<br>CH <b>53411</b><br><b>W10A</b> | APP CRS<br><b>103°</b> | Rwy Idg<br>TDZE<br>Apt Elev <b>911</b> |
|--|------------------------|--|

RNAV (GPS) RWY 10

WAUKESHA COUNTY (UES)

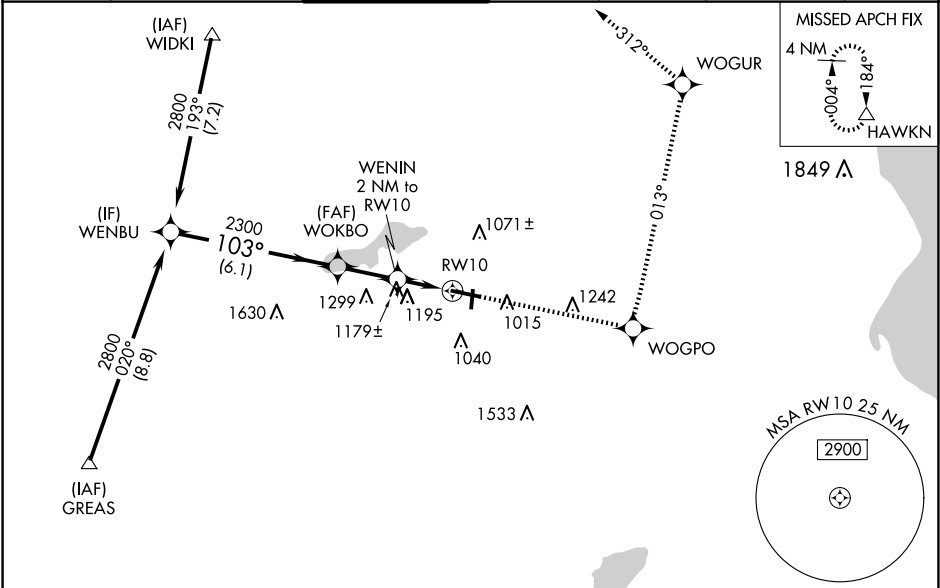
⚠

Baro-VNAV NA when using Lawrence J Timmerman altimeter setting. For uncompensated Baro-VNAV systems, LNAV/VNAV NA below -16°C (4°F) or above 54°C (130°F). DME/DME RNP-0.3 NA. When local altimeter setting not received, use Lawrence J Timmerman altimeter setting: increase LPV DA to 1147 feet, LNAV/VNAV DA to 1583 feet and all Cats visibility ¼ SM; increase all MDAs 60 feet and Circling Cat C and D visibility ¼ SM.

MALSR

MISSED APPROACH: Climb to 3000 direct WOGPO and left turn on track 013° to WOGUR and track 312° to HAWKN and hold.

|                        |  |  |                         |                          |   |                         |
|------------------------|--|--|-------------------------|--------------------------|---|-------------------------|
| ATIS<br><b>118.875</b> | MILWAUKEE APP CON<br><b>125.35 307.0</b> | WAUKESHA TOWER ★<br><b>123.7</b> (CTAF) <b>0</b> | GND CON<br><b>121.6</b> | CLNC DEL<br><b>121.6</b> | CLNC DEL<br><b>128.7</b><br>(When twr closed) | UNICOM<br><b>122.95</b> |
|------------------------|--|--|-------------------------|--------------------------|---|-------------------------|



|                   |             |             |              |                    |  |
|-------------------|-------------|-------------|--------------|--------------------|--|
| Procedure Turn NA |             | 3000        | WOGPO        | WOGUR              | HAWKN  |
| WENBU             |             | 2800        | WOKBO        | WENIN 2 NM to RW10 | RW10   |
| GP 3.00° TCH 53   |             | 103°        | 2300         | *1580              |  |
|                   |             | 6.1 NM      | 2.2 NM       | 2 NM               |  |
| CATEGORY          | A           | B           | C            | D                  |  |
| LPV DA            | 1101-1½     |             | 200 (200-½)  |                    |  |
| LNAV/VNAV DA      | 1537-1¾     |             | 636 (700-1¾) |                    |  |
| LNAV MDA          | 1440-1½     | 539 (600-½) | 1440-1       | 1440-1¼            |  |
|                   |             |             | 539 (600-1)  | 539 (600-1¼)       |  |
| CIRCLING          | 1460-1      | 1500-1      | 1540-1¾      | 1640-2¼            |  |
|                   | 549 (600-1) | 589 (600-1) | 629 (700-1¾) | 729 (800-2¼)       |  |
|                   |             |             |              |                    | HIRL Rwy 10-28 <b>0</b><br>MIRL Rwy 18-36 <b>0</b><br>REIL Rwy 28 <b>0</b><br>REIL Rws 18 and 36 |