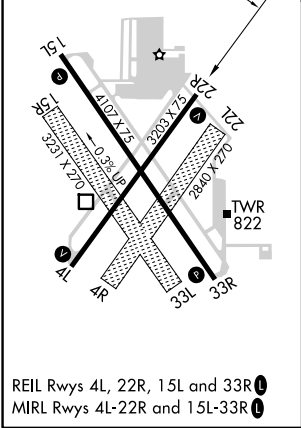
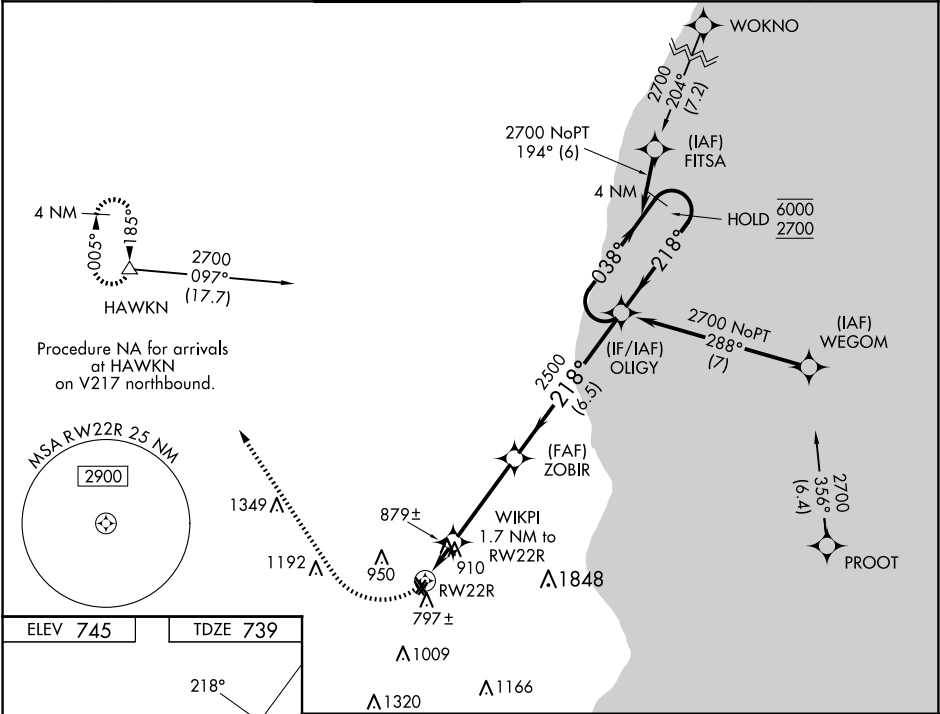




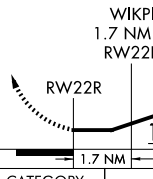
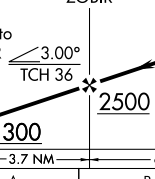
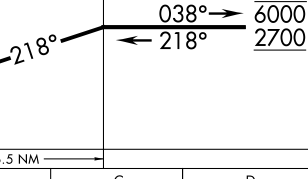
WAAS CH 69524 W22A	APP CRS 218°	Rwy Idg TDZE 739 Apt Elev 745	3203
--	------------------------	---	-------------

RNAV (GPS) RWY 22R
LAWRENCE J TIMMERMAN (MWC)

RNP APCH.	MISSED APPROACH: Climbing right turn to 3000 direct HAWKN and hold.
Circling NA to Rwy's 4R, 15R, 22L, and 33L. Rwy 22R helicopter visibility reduction below ¼ SM NA. When local altimeter setting not received, use General Mitchell Intl altimeter setting and increase all MDAs 40 feet and LP and LNAV visibility Cats C and D ½ SM.	

ATIS 128.3	MILWAUKEE APP CON 125.35 307.0	TIMMERMAN TOWER ★ 120.5 (CTAF) 0	GND CON 121.7	CLNC DEL 121.7 (When twr closed)	UNICOM 122.95
----------------------	--	--	-------------------------	---	-------------------------



		VGSI and descent angles not coincident (VGSI Angle 4.00/TCH 45).		4 NM Holding Pattern	
					
1.7 NM		3.7 NM		6.5 NM	
CATEGORY	A		B	C	D
LP MDA	1160-1 421 (500-1)		1160-1¼ 421 (500-1¼)		
LNAV MDA	1160-1 421 (500-1)		1160-1¼ 421 (500-1¼)		
CIRCLING	1220-1 475 (500-1)		1340-1 595 (600-1)	1360-1¾ 615 (700-1¾)	1560-2¾ 815 (900-2¾)

EC-3, 10 JUL 2025 to 07 AUG 2025

EC-3, 10 JUL 2025 to 07 AUG 2025