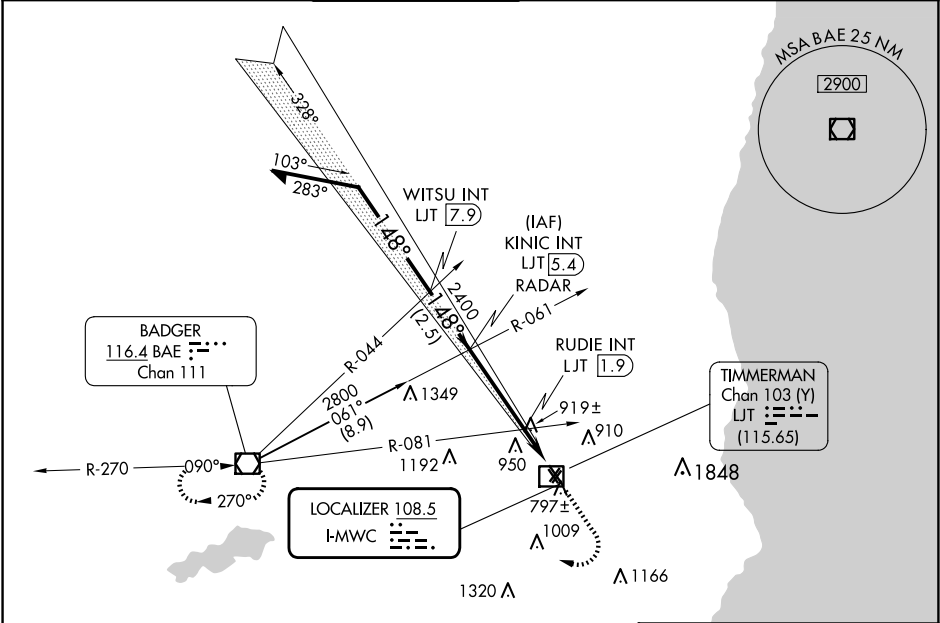


LOC I-MWC	APP CRS	Rwy Idg	4107
108.5	148°	TDZE	745
		Apt Elev	745

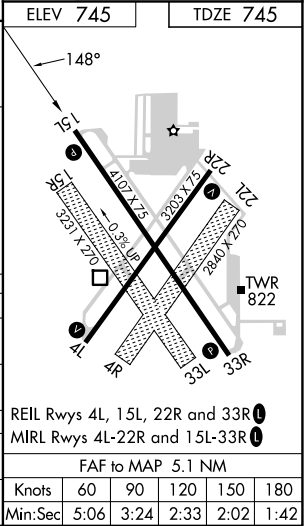
LOC RWY 15L

LAWRENCE J TIMMERMAN (MWC)

<div><div></div><div></div></div> <div>Circling NA to Rwys 4R, 15R, 22L and 33L. Rwy 15L helicopter visibility reduction below ¾ SM NA. # Simultaneous reception of I-MWC and LJT DME required.</div>				MISSED APPROACH: Climb to 3000 then right turn direct BAE VOR/DME and hold.	
ATIS	MILWAUKEE APP CON	TIMMERMAN TOWER ★	GND CON	CNLC DEL	UNICOM
128.3	125.35 307.0	120.5 (CTAF) 0	121.7	121.7 (When twr closed)	122.95



*1320 when using General Mitchell Intl altimeter setting. Remain within 10 NM		KINIC INT LJT 5.4 RADAR		3000	BAE
2800		WITSU INT LJT 7.9		RUDIE INT LJT 1.9	
2700		2400		*1280	
2.5 NM		3.5 NM		1.6 NM	
CATEGORY	A	B	C	D	
S-LOC 15L	1280-1	535 (600-1)	1280-1½	535 (600-1½)	
CIRCLING	1280-1	1340-1	1360-1¾	1560-2¾	
	535 (600-1)	595 (600-1)	615 (700-1¾)	815 (900-2¾)	
RUDIE FIX MINIMUMS (DUAL VOR RECEIVERS OR DME REQUIRED #)					
S-LOC 15L	1180-1	435 (500-1)	1180-1¼	435 (500-1¼)	
CIRCLING	1220-1	1340-1	1360-1¾	1560-2¾	
	475 (500-1)	595 (600-1)	615 (700-1¾)	815 (900-2¾)	



EC-3, 10 JUL 2025 to 07 AUG 2025

EC-3, 10 JUL 2025 to 07 AUG 2025