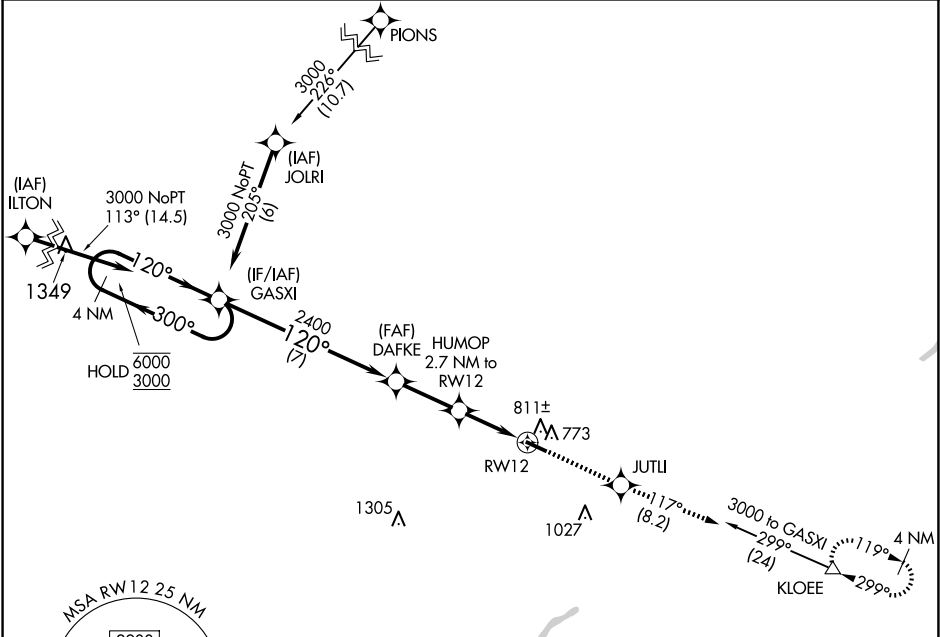


APP CRS	Rwy Ldg	4199
120°	TDZE	707
	Apt Elev	707

RNAV (GPS) RWY 12
DEFIANCE MEML (DFI)

RNP APCH.	MISSED APPROACH: Climb to 3000 direct JUTLI and on track 117° to KLOEE and hold.
⚠ Circling Rwy 30 NA at night. Rwy 12 helicopter visibility reduction below ¾ SM NA.	

ASOS 121.425	TOLEDO APP CON 134.35 307.0	UNICOM 122.7 (CTAF) 0
-----------------	--------------------------------	--------------------------



ELEV 707 TDZE 707

120°

4199 X 72

REIL Rwys 12 and 30 0

MIRL Rwy 12-30 0

VGSIs and descent angles not coincident (VGSIs Angle 3.00/TCH 26).				
4 NM Holding Pattern		GASXI	DAFKE	JUTLI
6000 ← 300°		3000	HUMOP 2.7 NM to RW12	tr 117°
3000 → 120°		2400	1.2 NM to RW12	KLOEE
		1600		
		7 NM	2.5 NM	1.5 NM
CATEGORY	A	B	C	D
RNAV MDA	1100-1	393 (400-1)	1100-1½	393 (400-1½)
CIRCLING	1140-1 433 (500-1)	1160-1 453 (500-1)	1380-2 673 (700-2)	1380-2¼ 673 (700-2¼)

EC-2, 10 JUL 2025 to 07 AUG 2025

EC-2, 10 JUL 2025 to 07 AUG 2025