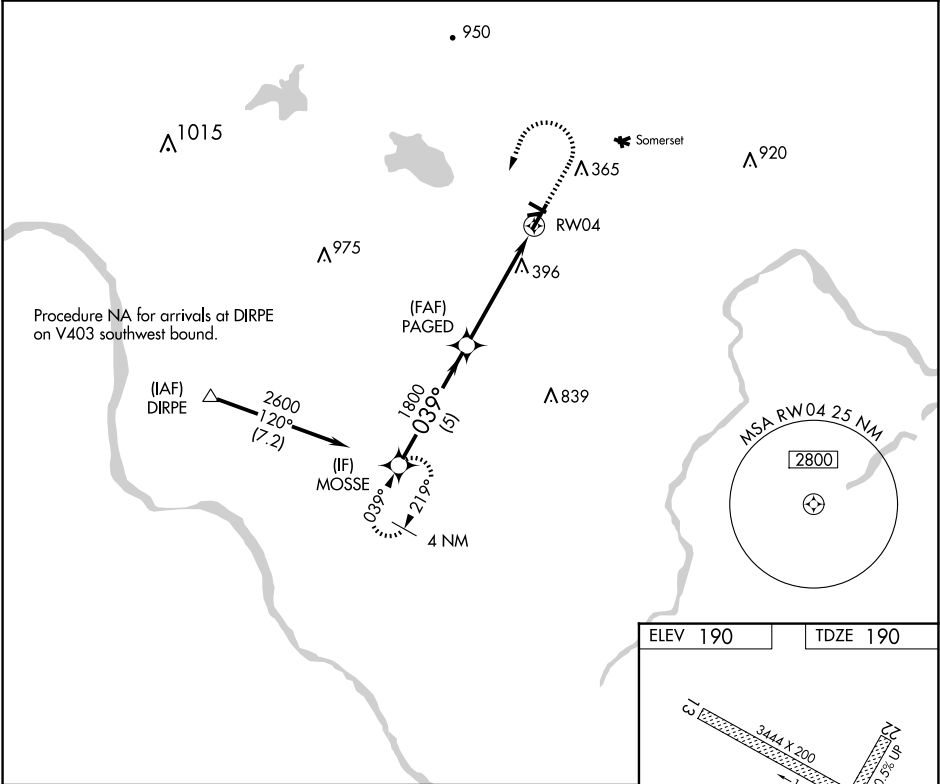


APP CRS	Rwy Ldg	5054
039°	TDZE	190
	Apt Elev	190

RNAV (GPS) RWY 4

SOLBERG/HUNTERDON (N51)

RNP APCH - GPS.		MISSED APPROACH: Climb to 1000 then climbing left turn to 2600 direct MOSSE and hold.
NA	Circling NA to Rwy 10-28 and 13-31. Rwy 4 helicopter visibility reduction below ¾ SM NA. Obtain local altimeter setting on CTAF, when not received, use Newark Liberty Intl altimeter setting and increase all MDAs 100 feet. VDP NA when using Newark Liberty Intl altimeter setting.	
NEWARK APP CON	GCO	UNICOM
132.8 379.9	121.725	122.8 (CTAF) 0



MOSSE		1000	2600	MOSSE
2600		039°	PAGED	
1800		3.00° TCH 41	1.4 NM to RW04	RW04
5 NM		3.5 NM	1.4 NM	
CATEGORY	A	B	C	D
LNAV MDA	680-1	490 (500-1)	NA	
CIRCLING	680-1 490 (500-1)	760-1 570 (600-1)	NA	

