

NE-2, 10 JUL 2025 to 07 AUG 2025

OLEAN, NEW YORK

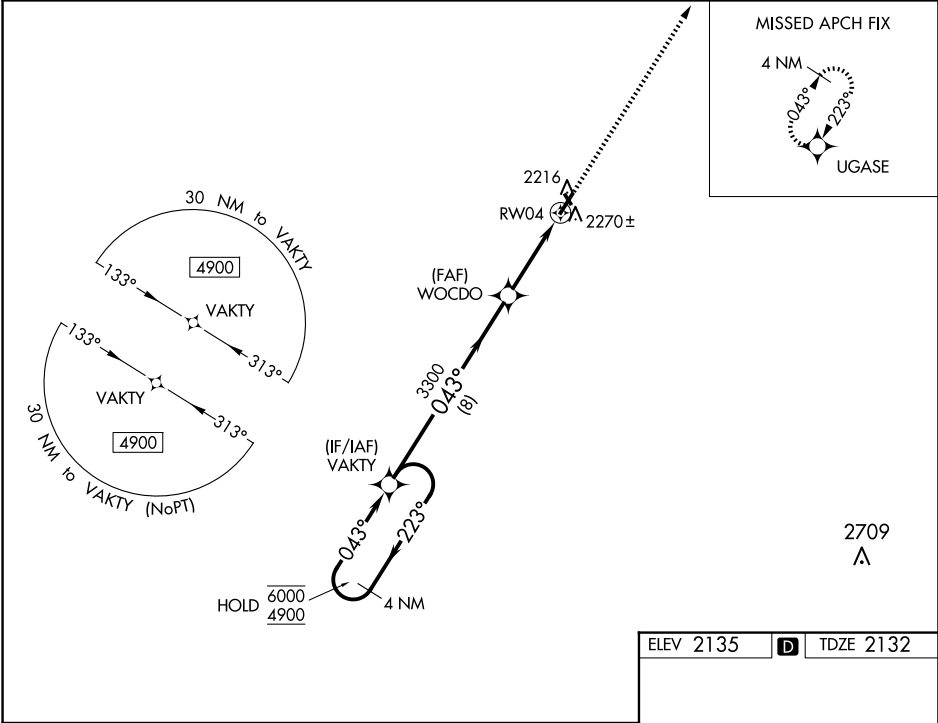
AL-5072 (FAA)

23222

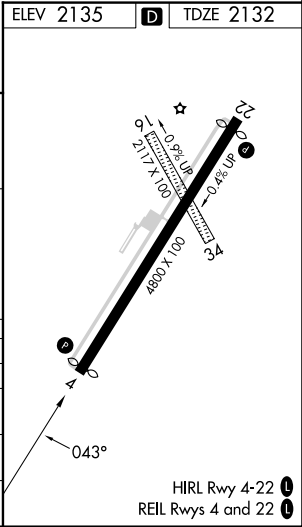
WAAS CH <b>53401</b> <b>W04A</b>	APP CRS <b>043°</b>	Rwy Idg TDZE Apt Elev	<b>4500</b> <b>2132</b> <b>2135</b>
--	------------------------	-----------------------------	---

**RNAV (GPS) RWY 4**  
CATTARAUGUS COUNTY-OLEAN (OLE)

RNP APCH-GPS. Circling NA to Rwy 16 and 34. Rwy 4 helicopter visibility reduction below ¾ SM NA. When VGSI inop, Circling Rwy 22 NA at night. For uncompensated Baro-VNAV systems, LNAV/VNAV NA below -19°C or above 54°C.		MISSED APPROACH: Climb to 4500 direct UGASE and hold.
AWOS-3 <b>118.375</b>	CLEVELAND CENTER <b>124.325 353.85</b>	UNICOM <b>122.8 (CTAF)</b>



4 NM Holding Pattern		VAKTY	WOCD0	4500	UGASE
6000 ← 223°		4900 → 043°	3300	1.2 NM to RW04	
GP 3.00°		TCH 40	3300	1.2 NM to RW04	
8 NM		2.3 NM	1.2 NM		
CATEGORY	A	B	C	D	
LPV DA		2382-3¼	250 (300-¾)		
LNAV/VNAV DA		2549-1⅛	417 (500-1⅝)		
LNAV MDA	2560-1	428 (500-1)	2560-1¼	428 (500-1¼)	
CIRCLING	2620-1	485 (500-1)	2680-1½	2720-2	
			545 (600-1½)	585 (600-2)	



OLEAN, NEW YORK  
Amdt 2B 10AUG23

42°14'N - 78°22'W

CATTARAUGUS COUNTY-OLEAN (OLE)  
**RNAV (GPS) RWY 4**

NE-2, 10 JUL 2025 to 07 AUG 2025