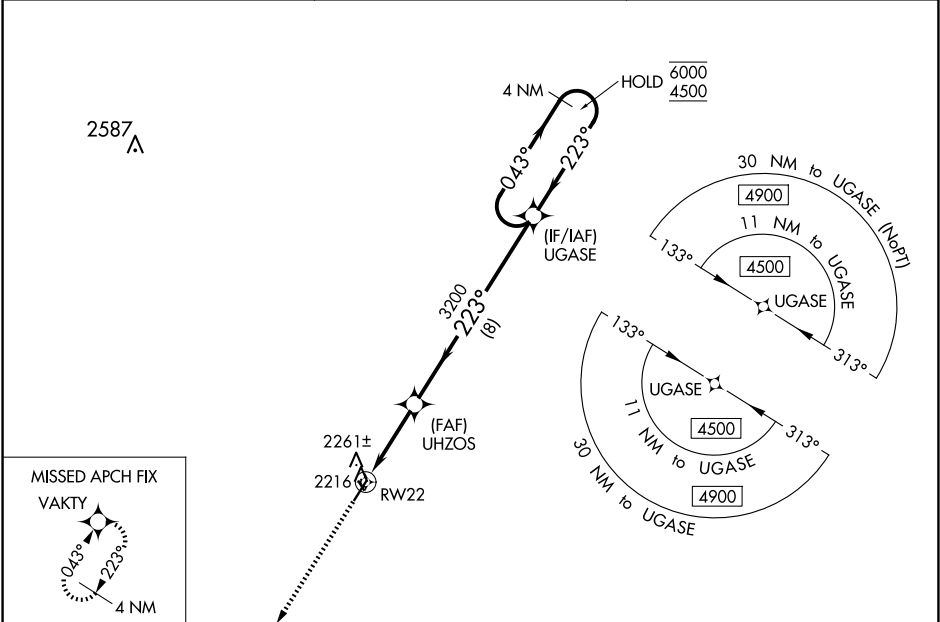


WAAS CH <b>99401</b> <b>W22A</b>	APP CRS <b>223°</b>	Rwy Idg TDZE Apt Elev	<b>4500</b> <b>2132</b> <b>2135</b>
--	------------------------	-----------------------------	---

RNAV (GPS) RWY 22

CATTARAUGUS COUNTY-OLEAN (OLE)

RNP APCH-GPS.		MISSED APPROACH: Climb to 4900 direct VAKTY and hold.
Circling NA to Rwys 16 and 34. For uncompensated Baro-VNAV systems, LNAV/VNAV NA below -19°C or above 54°C. When VGSI inop, Straight-in/Circling Rwy 22 procedure NA at night.		
AWOS-3 <b>118.375</b>	CLEVELAND CENTER <b>124.325 353.85</b>	UNICOM <b>122.8 (CTAF) 1</b>



ELEV 2135	<b>D</b>	TDZE 2132
-----------	----------	-----------

