

MARSHALL, TEXAS

AL-5070 (FAA)

23166

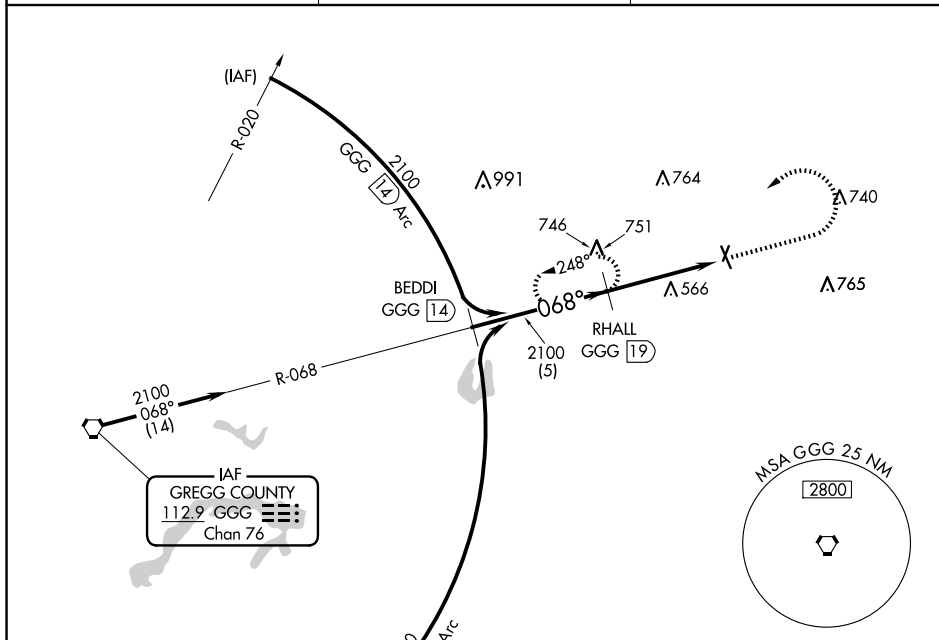
VORTAC GGG 112.9 Chan 76	APP CRS 068°	Rwy Idg TDZE Apt Elev	N/A N/A 357
---------------------------------------	------------------------	-----------------------------	--

VOR/DME-A
HARRISON COUNTY (ASL)

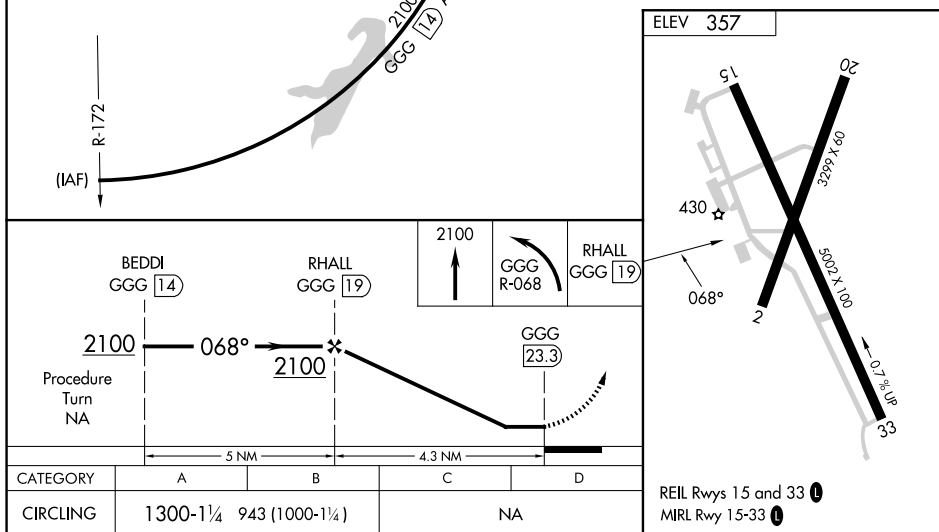
T When local altimeter setting not received, use Longview altimeter setting and increase all MDA 60 feet; increase Cat B visibility to 1½. Night Landing: Rwy 2, 15, 20 NA. Helicopter visibility reduction below 1 SM NA.

MISSED APPROACH: Climb to 2100 then left turn via GGG R-068 to RHALL/GGG 19 DME and hold.

AWOS-3PT 118.675	SHREVEPORT APP CON 119.9 335.55	UNICOM 122.8 (CTAF) 1
----------------------------	---	---------------------------------



SC-2, 10 JUL 2025 to 07 AUG 2025

MARSHALL, TEXAS
Amdt 4F 25MAR21

32°31'N-94°18'W

HARRISON COUNTY (ASL)
VOR/DME-A