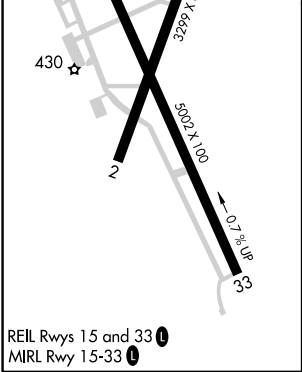
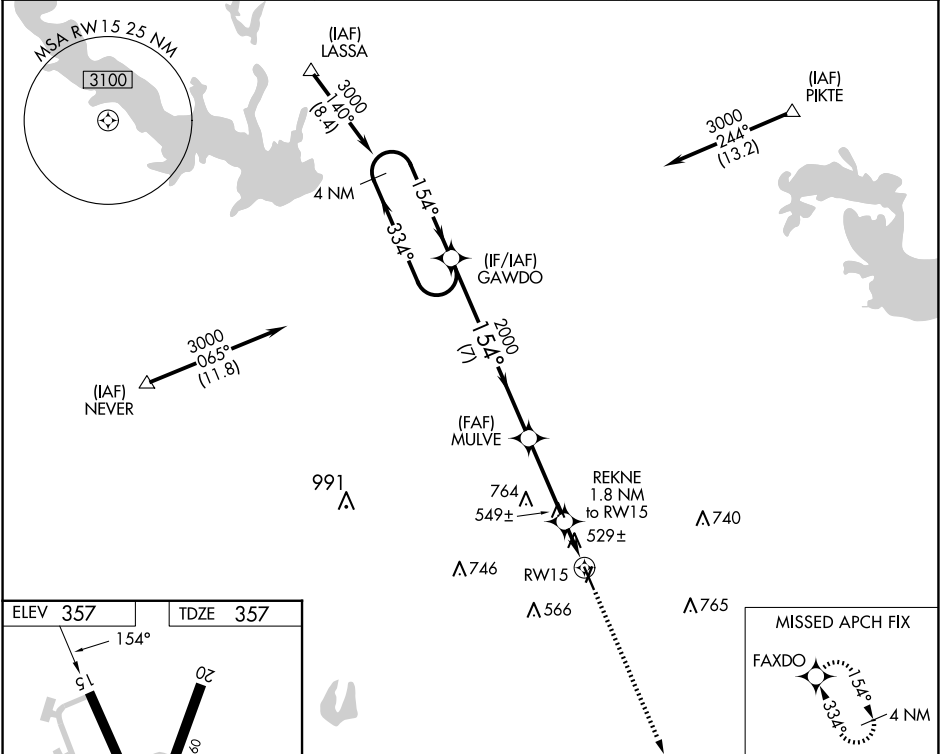


WAAS CH 90426 W15A	APP CRS 154°	Rwy Idg TDZE Apt Elev	5002 357 357
--	------------------------	-----------------------------	---

RNAV (GPS) RWY 15
HARRISON COUNTY (ASL)

RNP APCH. ▼ NA Rwy 15 helicopter visibility reduction below 1 SM NA. When local altimeter setting not received, use Longview altimeter setting and increase all MDA 60 feet; increase LP Cat C visibility ½ mile. Procedure NA at night.	MISSED APPROACH: Climb to 3000 direct FAXDO and hold.
---	--

AWOS-3PT 118.675	SHREVEPORT APP CON 119.9 335.55	UNICOM 122.8 (CTAF) 0
----------------------------	---	---------------------------------



VGSI and descent angles not coincident.				3000	FAXDO
GAWDO				2000	960
MULVE				3.00°	TCH 40
REKNE 1.8 NM to RW15				7 NM	3.2 NM
RW15				1.8 NM	
CATEGORY	A	B	C	D	
LP MDA	780-1	423 (500-1)	780-1¼ 423 (500-1¼)	NA	
LNAV MDA	800-1	443 (500-1)	800-1⅜ 443 (500-1⅜)	NA	

SC-2, 10 JUL 2025 to 07 AUG 2025

SC-2, 10 JUL 2025 to 07 AUG 2025