

RNAV (GPS) RWY 27

APCH CRS 273°	Rwy Idg 4121 TDZE 242 Arpt Elev 243
-------------------------	--

[USA]

SIMMONS AAF (KFBG)

RNP APCH - GPS

T When local altimeter setting not received, use Pope AAF altimeter setting.

MISSED APPROACH: Climbing left turn to 2100 direct AXILE and hold.

ATIS
139.25

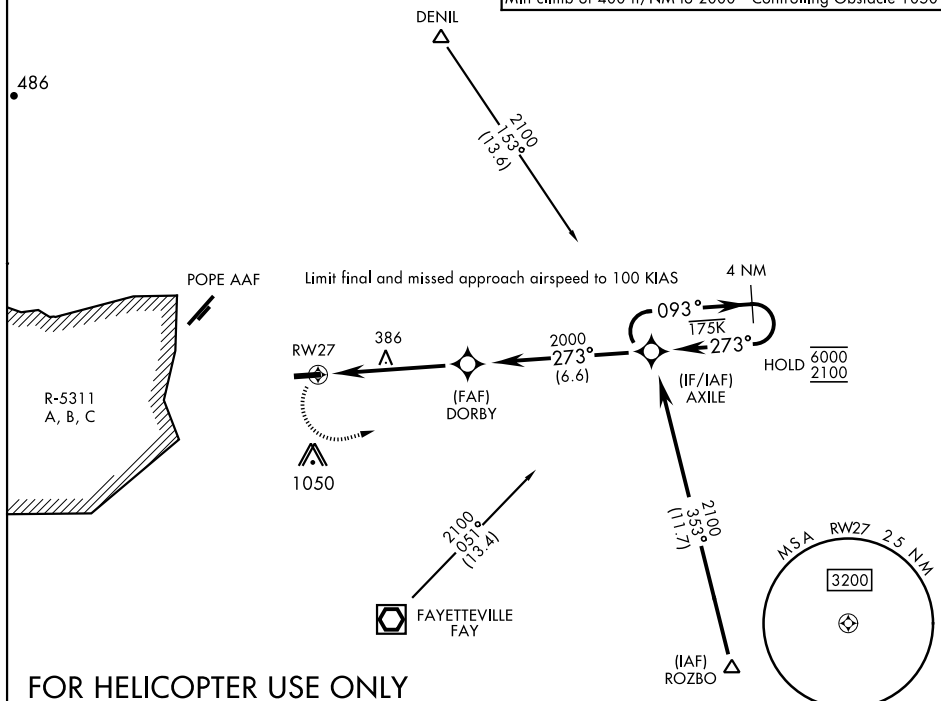
FAYETTEVILLE APP CON
133.0 290.25

TOWER ★
125.9 240.625

GND CON
121.9 229.4

Rwy 27 helicopter visibility reduction
below 3/4 mile not authorized.

Knots	60	120	180	240	300	360
V/V(fpm)	400	800	1200	1600	2000	2400
Min climb of 400 ft/NM to 2000 - Controlling Obstacle 1050						



FOR HELICOPTER USE ONLY

