

RNAV (GPS) RWY 32R

WAAS Chan 60335 W32B	APCH CRS 322°	Rwy Idg 13,502 TDZE 221 Arpt Elev 228
--	-------------------------	--

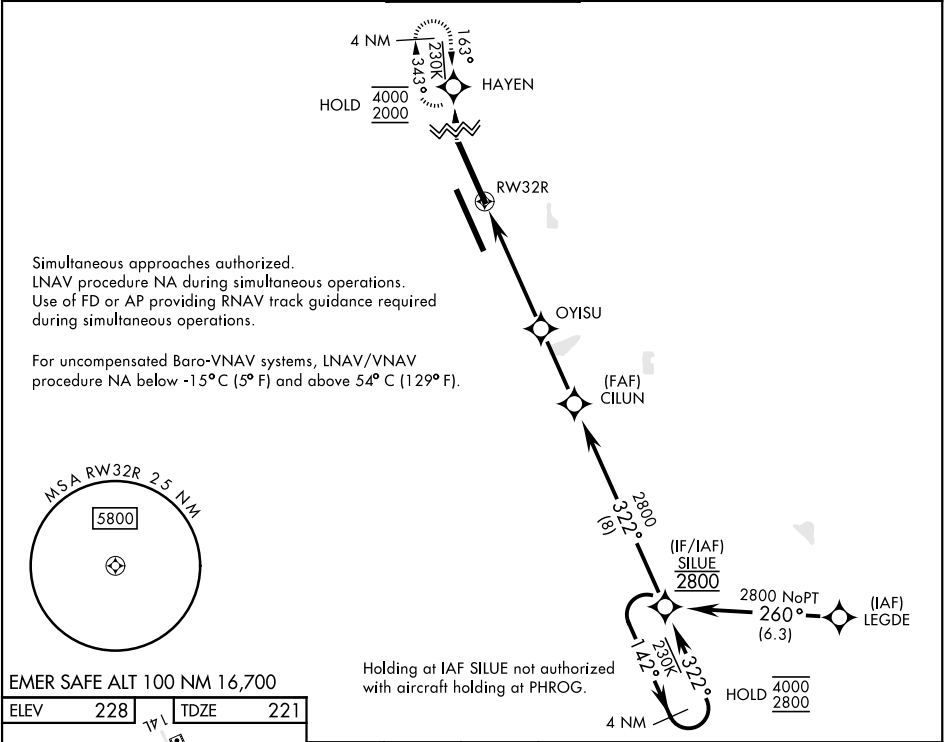
[USN]

LEMOORE NAS (REEVES FIELD) (KNLC)

RNP APCH - GPS

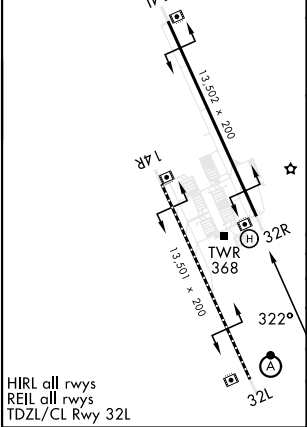


ATIS ★ 121.575 327.15	APP CON 124.1 269.025 (N) 118.15 269.025 (S)	TOWER ★ 128.3 360.2	GND CON 121.65 305.2	CLNC DEL 124.1 371.9	ASR/PAR
---------------------------------	--	-------------------------------	--------------------------------	--------------------------------	---------



EMER SAFE ALT 100 NM 16,700

ELEV 228	TDZE 221
----------	----------



HIRL all rwys
REIL all rwys
TDZL/CL Rwy 32L

	1200	2000	HAYEN	
				4 NM Holding Pattern
				CILUN
				SILUE
				GP 3.00° TCH 45
CATEGORY	A	B	C	D
LPV DA	421-¾	200	(200-¾)	
LNAV/VNAV DA	587-1	366	(400-1)	
LNAV MDA	680-1	459 (500-1)	680-1⅜ 459 (500-1⅜)	
CIRCLING	680-1	452 (500-1)	680-1½ 452 (500-1½)	780-2 552 (600-2)

RNAV (GPS) RWY 32R

SW-2, 10 JUL 2025 to 07 AUG 2025

SW-2, 10 JUL 2025 to 07 AUG 2025