

RNAV (GPS) RWY 32L

WAAS Chan 50085 W32A	APCH CRS 322°	Rwy Idg 13,501 TDZE 227 Arpt Elev 228
--	-------------------------	--

[USN]

LEMOORE NAS (REEVES FIELD) (KNLC)

RNP APCH - GPS

▼ * When ALS inop, increase vis to ¾ mile.
** When ALS inop, increase vis to 1 mile.
*** When ALS inop, increase CAT AB vis to 1 mile, CAT CD vis to 1¾ miles.

ALSF-2



MISSED APPROACH: Climb to 3100 direct HELMM and hold.

ATIS ★
121.575 327.15

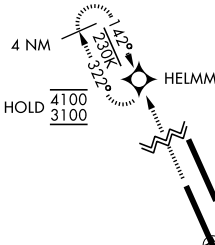
APP CON
124.1 269.025 (N)
118.15 269.025 (S)

TOWER ★
128.3 340.2

GND CON
121.65 305.2

CLNC DEL
124.1 371.9

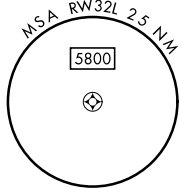
ASR/PAR



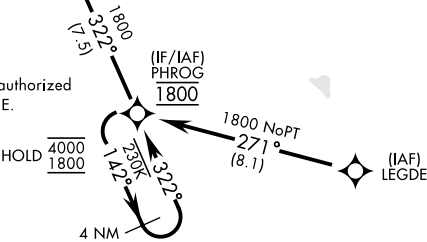
CAUTION: Glidepath-to-wheel height for height group 4 is 20'.

For uncompensated Baro-VNAV systems, LNAV/VNAV procedure NA below -15° C (5° F) and above 54° C (129° F).

Simultaneous approaches authorized.
LNAV procedure NA during Simultaneous operations.
Use of FD or AP providing RNAV track guidance required during simultaneous operations.

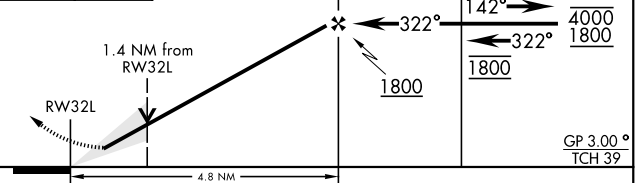
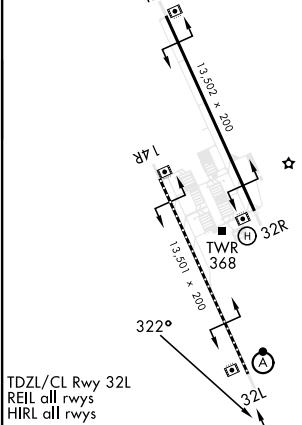


Holding at IAF PHROG not authorized with aircraft holding at SILUE.



EMERG SAFE ALT 100 NM 16,700

ELEV 228 TDZE 227



CATEGORY	A	B	C	D
LPV DA *	427-½		200	(200-½)
LNAV/VNAV DA **	595-¾	368	(400-¾)	482-½ 255 (300-½)
LNAV MDA ***	700-½	473 (500-½)	700-1	473 (500-1)
CIRCLING	700-1	472 (500-1)	700-1½ 472 (500-1½)	780-2 552 (600-2)

RNAV (GPS) RWY 32L

SW-2, 10 JUL 2025 to 07 AUG 2025

SW-2, 10 JUL 2025 to 07 AUG 2025